



CUMBERLAND
COUNTY SCHOOLS

LILLIAN BLACK ELEMENTARY SCHOOL

**Studies and Reports in Support of
School Closing Recommendation**



LILLIAN BLACK ELEMENTARY SCHOOL

POSSIBLE SCHOOL CLOSING STUDY

Introduction

Lillian Black Elementary School has been serving the children of Spring Lake and Cumberland County since its original construction in 1938. Traditionally, schools have been considered centerpieces of communities and neighborhoods and evoke strong memories of where we spend our youth. However, like any other real estate, school buildings are not immune from the changes taking place in the surrounding area, the challenges of supply and demand, changes in demographics, educational best practices and economics. They have maintenance and operational costs. At some point, all of this must be taken into consideration, with the top priority being the welfare of students to be affected by any proposed school closing and consolidation. Pursuant to N.C.G.S. 115C-72, the following study also considers geographic conditions, anticipated increases or decreases in enrollment, inconvenience or hardship that may be experienced by the affected students, the cost of providing the school facilities which will follow any closure or consolidation, and other factors as discussed below.

Lillian Black Elementary School is located in an urban area within Spring Lake, North Carolina. Surrounding the school are several newly developed commercial properties, aging residential rental and privately-owned lots. Lillian Black Elementary currently does not provide adequate space consistent with the environment required to provide a 21st Century educational experience for its students.

Facility Evaluation and Comparative Study

CCS retained the services of Thomas Goetz, Architect, to perform an evaluation of the Lillian Black Elementary campus. The study included physical characteristics of the school and site, spatial comparison of the Lillian Black building to current DPI Standards as well as observations, assumptions and findings of the existing physical condition of the building.

The overall appearance and feeling of the school is one of an outdated environment that has outlived its usefulness as a viable and suitable learning environment and cannot, without major expenditures, support a modern, comprehensive educational program as outlined in guidance provided by the North Carolina Department of Public Instruction.

The main (front) building was constructed in 1938 and expanded in 1940. A second wing was added in 1951, which houses additional classrooms and a dining/kitchen area. Subsequent

classroom expansions were added to the second wing in 1959 and 1961. Both the interior and exterior building appearance is very outdated and under maintained. The electrical, mechanical and technology systems are outdated. Due to the age of the school, overall maintenance needs / repairs have been difficult to keep pace and expenses to do so have escalated.

The school does not comply with current accessibility requirements for access from ground level to finished floor level. The front wing is raised on crawl space and has no ramp access. The toilet facilities do not comply with current accessibility standards in both wings. The front wing is wood frame construction and the corridor does not appear to be a protected egress corridor. The classrooms on this wing do not have exterior egress by windows or doors, except by the way of the corridor.

The school lacks support spaces, such as a multi-purpose room, auditorium and gymnasium. Smaller classrooms have been converted for activity use. The cafeteria is open to food preparation and the freezer space is located outside of the kitchen on a classroom corridor. Third through fifth grade classrooms are significantly undersized by DPI program space guidelines. Outdoor play spaces are substandard. There is 45-degree parking in the front of the school. These parking spaces are on a two-way public street and subject to unsafe conditions. The two buildings are connected by an open covered breezeway.

Space utilization and upgrades do not appear practical and justifiable due to the significant costs that would be needed to carry out a comprehensive renovation project on such an old structure.

Capacity of the Building

Lillian Black Elementary houses grades K-5. Using the School Capacity Worksheet provided by DPI School Planning, the capacity of Lillian Black Elementary School is 274 students.

Kindergarten	3 Classrooms	x 18 students =	54
1 st Grade	3 Classrooms	x 16 students =	48
2 nd & 3 rd Grade	4 Classrooms	x 17 students =	68
4 th & 5 th Grade	4 Classrooms	x 26 students =	<u>104</u>
TOTAL		=	274

Membership

Enrollment at Lillian Black Elementary School has ranged from 177 to 233 over the last fifteen years. Currently there are 175 students that live in the assignment area and attend Lillian Black Elementary School.

Kindergarten	43
1 st Grade	29
2 nd Grade	29
3 rd Grade	28
4 th Grade	21

5 th Grade	104
TOTAL	175

Organization of the School System Relative to Lillian Black

Many of the elementary schools built in Cumberland County prior to 1970 are small and have capacities of less than 500 students. The overall student enrollment of the Spring Lake schools has changed significantly over the past twenty-plus years. Spring Lake has three elementary schools in very close proximity. Two have capacities under 400 students, Lillian Black (274) and Manchester Elementary (386). Prior to 2011, a third elementary school, Mae Rudd Williams, served as a kindergarten center. Nearby W.T. Brown has a capacity of 667 students. In 1998, Brown’s enrollment peaked at 638. The vast majority of students attending Brown at that time came from inside Spring Lake. Today, the enrollment is 283 with the vast majority of the student population coming from outside of Spring Lake. W.T. Brown is severely underutilized, and is a newer, more modern facility capable of providing program spaces more in line with current DPI standards. A minor redistricting plan for moving the existing student population of Lillian Black Elementary School will be required. W.T. Brown is currently well under capacity and will be able to absorb the entire Lillian Black student population.

Costs of Operation

Small schools that are underutilized are generally insufficient and can be costly. In closing Lillian Black Elementary, redistricting students and staff and finding a suitable repurposing of the remaining building, an overall cost savings will be realized, mostly in the form of capital outlay expenditure avoidance. Redistricting students to W.T. Brown will increase capacity at that school, improving its fiscal efficiency. Lillian Black administration and staff will be reassigned to schools where there are vacancies, reducing overall staff costs by the following positions, at a minimum:

Administrators	2	Certified Staff	18
Classified Staff	7	Cafeteria Staff	2

A small utilities savings may be realized. The kitchen will be limited in use, also contributing to decreased utility costs. Water usage should decline significantly with no students in the building.

By closing the school to students and repurposing the building, the school system will avoid significant capital outlay expenditures in several ways. These are expenditures that the school system simply does not have the fiscal ability to support with its present Capital Outlay allocation. Costs associated with major renovations to the building and site to bring it into compliance from a building code, Americans with Disabilities Act (ADA) and current DPI space standards perspective are prohibitive.

Transportation

Because all three Spring Lake Elementary Schools are in close proximity, there would be little to no change in transportation costs if students are reassigned from Lillian Black to W. T. Brown Elementary. There would be no significant change expected in bus routes. The furthest distance that students would have to travel would be 7.2 miles and there would be no change in feeder schools alignment.

Diversity

The demographic breakdown of the Lillian Black student population is 54% Black, 16% White, 20% Hispanic, 1% Indian and 9% Multi-Racial. The assignment area has an economic index of 3.0, low-moderate. Reassigning students to W.T. Brown will make the combined student population more balanced and will not impact the economic index.

Alternative Uses

Options for alternative uses of Lillian Black Elementary School by the district are currently being considered.

Program Considerations

Lillian Black Elementary School currently offers a traditional elementary academic program. The intent is to assign these students to W.T. Brown Elementary, which also offers a traditional elementary academic program, but offers a newer, more suitable 21st century learning environment. Lillian Black staff will be given priority in the 2021-2022 transfer process.

Recommended Decision

The district hosted numerous meetings with various stakeholders, including faculty, staff and parents of Lillian Black Elementary, W.T. Brown Elementary and Manchester Elementary Schools. Other stakeholders included Cumberland County Schools central office administration, Board of Education members and other community and municipal representatives. The Operations staff presented the Cumberland County Board of Education with all factors considered in the assessment of the building as well as the input received from the stakeholder meetings. Staff recommended consideration of three minor reassignment plan options for the Spring Lake area. Feedback was mixed amongst all stakeholder groups. On March 8, 2022, the CCS Board of Education tentatively approved a targeted reassignment plan for the Spring Lake area, reassigning all Lillian Black Elementary School students and 78 students from Manchester Elementary School to W.T. Brown Elementary School, effective the 2022-2023 school year. The targeted reassignment plan is specifically contingent upon closure of Lillian Black Elementary School, which is now recommended by administration.

On March 22 2022, I along with the Director of Operations & Planning for Cumberland County Schools conducted a walk-through of the above school.

The overall appearance and feeling of the school, is one of an outdated environment that has outlived its usefulness as a viable and suitable learning environment and cannot without major expenditures support a modern, comprehensive educational program as outlined by DPI guidelines.

The school's front wing was constructed in 1938 with a expanded addition in 1940. The back building was then added beginning in 1951 and later added onto 1959 and 1961. The school, houses grades K-5 with a capacity of 274. Enrollment at Lillian Black has ranged between 177-233 for the last 15 years. This year's enrollment is 191. Due to the schools age and high maintenance needs, the plan is to reassign the current student population to the newer more suitable learning environment of W.T. Brown Elementary School. W.T. Brown was constructed in 1994 and later expanded in 1999. It was noted in our walk through that the overall student enrollment of the Spring Lake area Schools has changed significantly. CCS has struggled through several reassignment plans to keep up the enrollment at Lillian Black & W.T. Brown schools, but a declining student population has continued. W. T. Brown has a capacity of 667. Back in 1998, they peaked in enrollment at 638. The vast majority of the school population that attends W. T. Brown now comes from outside the Spring Lake area. In 1998, the majority of W. T. Brown's enrollment came from Spring Lake. This year's enrollment at W. T. Brown is 283. Since W. T. Brown is a more modern updated facility which can handle all of the population at both schools, it appears to be the logical decision to reassign the Lillian Black students so they can be integrated into an environment that offers more comprehensive programs and services.

Physical Condition & Maintenance Observed

- Both the interior and exterior building's appearance is very dated and under maintained
- Support spaces such as auditorium & gymnasium are not provided, and small classrooms have been converted for activity use
- Classrooms have AC window units, so air quality issues are brought into question
- The cafeteria is open to the food prep area and the freezer space is located outside the kitchen on a classroom corridor
- The electrical, mechanical & technology systems appear outdated
- 12 foot plus ceiling height is not conducive to climate control
- Outdoor play spaces are substandard and outside the security fencing perimeter
- 3rd thru 5th grade classrooms, are significantly undersized per DPI guidelines
- 45 degree staff parking is on a two-way public street and subject to unsafe conditions
- There is an open-air covered connector tying front wing to back wing
- Space utilization and upgrades do not appear practical and justifiable due to significant costs that would be needed do carry out a comprehensive renovation project on such an old structure
- Due to the age of the school, overall maintenance needs / repairs have been difficult to keep pace and expenses to undertake have escalated

Code Deficiencies Observed

- School does not comply with accessibility requirements for accessing grounds to building. The 1938-1941 wing is raised on a crawl space and has no ramping to access.
- The toilet facilities do not comply with accessibility standards in both the front & back wings
- The front wing construction is wood frame construction, and the corridor appears not to be a protected egress corridor nor do the classrooms have exterior egress by windows or doors except by way of the corridor



1220 Ft. Bragg Road

Suite 200-A

Fayetteville, NC 28305

(910) 485-3000

t.goetz.architect@gmail.com

Capital Improvement Plan Priority List

	A	B	C	D	E	F	G
1	a/o 10/14/20		Perf Ranking	Util Ranking	FCI ranking		
2			15%	15%	70%		
3	440 Sunnyside		13	6	9	9.15	
4	344 J. W. Coon		44	12	4	11.20	2.05
5	316 Lillian Black		28	31	5	12.35	1.15
6	412 Raleigh Road		75	3	1	12.40	0.05
7	352 Cumberland Road		34	23	8	14.15	1.75
8	444 Teresa C. Berrien		4	30	15	15.60	1.45
9	432 Stedman Primary		80	18	2	16.10	0.50
10	425 South View Middle		21	25	16	18.10	2.00
11	426 Sherwood Park		11	27	18	18.30	0.20
12	374 Alger B. Wilkins		1	43	17	18.50	0.20
13	361 Ferguson~Easley		12	15	23	20.15	1.65
14	308 Ashley		39	11	20	21.50	1.35
15	410 Ponderosa		34	51	13	21.85	0.35
16	312 Beaver Dam		85	33	6	21.90	0.05
17	413 Howard Learning		3	86	14	23.15	1.25
18	400 Montclair		31	83	12	25.50	2.35
19	452 Westarea		19	64	19	25.75	0.25
20	448 Vanstory Hills		73	69	7	26.20	0.45
21	404 William H. Owen		38	39	21	26.25	0.05
22	320 Brentwood		51	77	11	26.90	0.65
23	405 Walker-Spivey		26	26	28	27.40	0.50
24	360 Hillsboro		90	90	3	29.10	1.70
25	449 Ramsey St. Alt.		2	86	25	30.70	1.60
26	401 Morganton Road		26	79	22	31.15	0.45
27	340 College Lakes		53	1	33	31.20	0.05
28	386 Margaret Willis		16	46	32	31.70	0.50
29	363 Glendale Acres		39	28	31	31.75	0.05
30	428 Spring Lake		14	17	39	31.95	0.20
31	372 Lewis Chapel		9	35	37	32.50	0.55
32	322 Douglas Byrd High		5	29	41	33.80	1.30
33	328 Fuller Performance Learning		90	90	10	34.00	0.20
34	396 Mary McArthur		20	41	36	34.35	0.35
35	332 Eastover Central		83	36	24	34.65	0.30
36	375 Gray's Creek Elem		68	47	27	36.15	1.50
37	382 Lucile Souders		44	40	38	39.20	3.05
38	416 J. W. Seabrook		63	44	34	39.85	0.65
39	459 W. T. Brown		56	8	44	40.40	0.55
40	366 Howard Hall		64	7	43	40.75	0.35
41	326 Elizabeth Cashwell		50	70	35	42.50	1.75
42	371 Ireland Drive		25	67	42	43.20	0.70
43	356 District 7		77	73	30	43.50	0.30
44	368 Hope Mills Middle		41	22	49	43.75	0.25
45	0 Pauline Jones		90	90	24	43.8	0.05

	A	B	C	D	E	F	G
1	a/o 10/14/20		Perf Ranking	Util Ranking	FCI ranking		
2			15%	15%	70%		
46	365	Max Abbott	49	37	45	44.40	0.60
47	402	Manchester	24	63	46	45.25	0.85
48	424	Seventy-First High	6	21	60	46.05	0.80
49	384	Mae Rudd Williams	90	90	29	47.30	1.25
50	359	E. E. Smith	8	13	64	47.95	0.65
51	411	Reid Ross Classical	67	10	53	48.65	0.70
52	358	Luther "Nick" Jeralds	15	49	57	49.50	0.85
53	454	Westover Middle	29	45	55	49.60	0.10
54	325	Cape Fear	54	53	48	49.65	0.05
55	450	Warrenwood	46	24	58	51.10	1.45
56	380	Long Hill	75	54	47	52.25	1.15
57	336	Anne Chesnutt	18	19	67	52.45	0.20
58	418	Seventy-First Middle	82	81	40	52.45	0.00
59	397	E. Melvin Honeycutt	70	50	50	53.00	0.55
60	388	Massey Hill	72	9	59	53.45	0.45
61	414	Benjamin Martin	32	4	69	53.70	0.25
62	348	Cumberland Mills	51	72	51	54.15	0.45
63	306	Armstrong	71	42	54	54.75	0.60
64	446	Terry Sanford	16	34	68	55.10	0.35
65	455	Westover High	7	32	72	56.25	1.15
66	398	E. E. Miller	61	14	65	56.75	0.50
67	430	Stedman Elementary	80	59	52	57.25	0.50
68	408	Pine Forest High	48	58	61	58.60	1.35
69	310	Loyd Auman	22	61	66	58.65	0.05
70	370	Ed V. Baldwin	23	78	63	59.25	0.60
71	427	South View High	30	38	71	59.90	0.65
72	342	C. Wayne Collier	47	74	62	61.55	1.65
73	302	Alma Easom	73	82	56	62.45	0.90
74	321	Douglas Byrd Middle	10	76	73	64.00	1.55
75	338	Cliffdale	37	48	74	64.55	0.55
76	434	Stoney Point	77	2	77	65.75	1.20
77	373	Gallberry Farm	60	5	80	65.75	0.00
78	367	Bill Hefner	32	56	76	66.40	0.65
79	406	Pine Forest Middle	59	80	70	69.85	3.45
80	407	Lake Rim	36	52	82	70.60	0.75
81	415	Rockfish	66	60	75	71.40	0.80
82	417	New Century Middle	62	16	87	72.60	1.20
83	364	Alderman Road Elem	55	84	78	75.45	2.85
84	318	Jack Britt	65	75	79	76.30	0.85
85	383	Mac Williams	57	65	84	77.10	0.80
86	357	Gray's Creek High	42	85	83	77.15	0.05
87	369	John Griffin	79	62	81	77.85	0.70
88	403	New Century International	69	55	86	78.80	0.95
89	362	Gray's Creek Middle	58	71	85	78.85	0.05

Number of Students			700
Core Classrooms (K-5)			37
Classrooms	SPACE Sq. Ft	No. of Each Space	Sq. Ft./ Line Item
Elementary (PK-5) Classrooms			
Pre-K Classrooms	1,400	2	2,800
Kindergarten Clrms	1,200	5	6,000
Grade 1 Clrms	1,200	7	8,400
Grade 2-3 Clrms	1,200	14	16,800
Grade 4-5 Clrms	1,000	11	11,000
Subtotal			45,000
Arts/Computer Classrooms			
Art	1,400	1	1,400
Music	1,000	1	1,000
Dance/Drama	2,000	1	2,000
Computer Clrms	850	2	1,700
Subtotal			6,100
Small Group/Exceptional			
Resource roomss	450	6	2,700
Exceptional S/C	1,200	2	2,400
Subtotal			5,100
Classroom Total Area			56,200
Media Center			
Media (RLV)	3,400	1	3,400
Support spaces	1,500	1	1,500
Subtotal			4,900
Food Service			
Dining (3 servings)	3,750	1	3,750
Kitchen	2,000	1	2,000
Serving (serving lines)	650	1	650
Subtotal			6,400
Physical Education			
Multipurpose	4,000	1	4,000
Stage	600	1	600
Storage/Office	400	1	400
Subtotal			5,000
Administration, Misc.			
Principal	200	1	200
Assistant Principal	150	1	150
Secretary/reception	400	1	400
Secretary	300	1	300
Sims	120	1	120
Health	200	1	200
Office work room	250	1	250
Conference	250	1	250
Records	150	1	150
Office storage	200	1	200
Guidance room	450	1	450
Office/testing	450	3	1,350
Other student services	200	1	200
Teacher workroom	600	1	600
Teacher lounge(s)	600	1	600
Itinerant teacher offices	100	4	400
Book storage	900	1	900
General storage	1,000	1	1,000
Subtotal			7,720
Total Net Sq. Ft.			80,220
Walls, Toilets, Circulation, Mech, Custodial @ 35.0%			28,077
GRAND TOTAL Sq.Ft.			108,297
Sq.Ft./Student (incl. Pre-K+S/C)			155

ELEMENTARY SCHOOL USAGE WORKSHEET

School Code: **260-316**

School Name: **Lillian Black Elementary**

Bldg #: **1**

(1938)
Bldg Area SF: **6,072**
(1941)
Bldg Area SF: **11,229**

Total SF: **17,301**

Updated: 09/23/20

Room #	SF	Typ. SF	Meets Typ.	Usage	Notes
1	676	850		5th Grade Classroom	
2	662	300	X	Guidance Suite	
3	676	850		5th Grade Classroom	
TWK	400	300	X	Teacher Workroom	
CONF	202	200	X	Conference Room	
ADM1	190		X	Administrative Suite	
ADM2	281		X	Administrative Suite	
4	660	450	X	Resource	
5	721	1,000		3rd Grade Classroom	
6	657	1,000		3rd Grade Classroom	
7	675	850		4th Grade Classroom	
8	660	850		4th Grade Classroom	
9	674	450	X	Resource	
MED	3,116	1,600	X	Media Center	

ELEMENTARY SCHOOL USAGE WORKSHEET

School Code: **260-316**

School Name: **Lillian Black Elementary**

Bldg #: **2**

(1951)
Bldg Area SF: **7,874**

Total SF: **19,379**

(1959)
Bldg Area SF: **5,466**

(1960)
Bldg Area SF: **6,039**

Room #	SF	Typ. SF	Meets Typ.	Usage	Notes
KT	1,131	1,261		Kitchen	
DN	1,782	1,800		Dining / Cafeteria	
20	850	450		Resource	ESL Speech IC
21	855	1,200		Project Room	Music Art
22	663		X	Physical Education	
23	1,042	450	X	Resource Kindergarten	<i>*Assigned K Classroom</i>
24	1,043	1,200		Classroom Kindergarten	
25	1,043	1,200		Classroom Kindergarten	
26	1,042	1,000	X	1st Grade Classroom	
27	1,034	1,000	X	1st Grade Classroom	
28	1,034	1,000	X	1st Grade Classroom	
29	1,034	1,000	X	2nd Grade Classroom	
30	1,033	1,000	X	2nd Grade Classroom	

Bldg #: **3**

(UNK)
Bldg Area SF: **292**

Total SF: **292**

Room #	SF	Typ. SF	Meets Typ.	Usage	Notes
S	292	87	X	Storage	

Total School SF: 36,972

School Name: Lillian Black Elementary				
Classroom Type	Current #	Typical #	Meets Typ.	
Pre-K				
	Pre-K Classrooms	0	1	
Academic				
	Kindergartens	2	3	
	1st Grade	3	3	X
	2-3 Grade	4	6	
	4-5 Grade	4	4	X
	EC Self-Contained	0	1	
	Resource	4	3	X
	Computer Rooms	0	1	
Arts Education				
	Visual Arts	1	1	X
	Dance / Drama	0	0	X
	General Music	0	0	X
Physical Education				
	PE / MP / Gym	1	1	X



Cumberland County Schools

Average Daily Membership

UNIT: 260

2019-20 Average Daily Membership *

Name	Elem	Middle	High	Total
101 New High School	0	0	0	
102 North Elementary	0	0	0	
302 Alma O Easom Elementary	290	0	0	290
306 Armstrong Elementary	404	0	0	404
308 Ashley Elementary	194	0	0	194
310 Loyd E Auman Elementary	500	0	0	500
312 Beaver Dam Elementary	89	0	0	89
316 Lillian Black Elementary	217	0	0	217
318 Jack Britt High	0	0	1,864	1,864
320 Brentwood Elementary	476	0	0	476
321 Douglas Byrd Middle	0	546	0	546
322 Douglas Byrd High	0	0	967	967
325 Cape Fear High	0	0	1,372	1,372
326 Elizabeth M Cashwell Elementary	598	0	0	598
332 Eastover-Central Elementary	387	0	0	387
336 Anne Chesnutt Middle	0	513	0	513
338 Cliffdale Elementary	574	0	0	574
340 College Lakes Elementary	497	0	0	497
342 C Wayne Collier Elementary	500	0	0	500
344 J W Coon Elementary	189	0	0	189
347 Cumberland International Early Colle	0	0	269	269
348 Cumberland Mills Elementary	617	0	0	617
352 Cumberland Road Elementary	331	0	0	331
354 Cross Creek Early College	0	0	274	274
356 District No 7 Elementary	259	0	0	259
357 Gray's Creek High	0	0	1,400	1,400
358 Luther Nick Jeralds Middle	0	596	0	596
359 E E Smith High	0	0	871	871
361 Ferguson-Easley Elementary	274	0	0	274
362 Gray's Creek Middle	0	1,145	0	1,145
363 Glendale Acres Elementary	222	0	0	222
364 Alderman Road Elementary	667	0	0	667
365 R Max Abbott Middle	0	804	0	804
366 Howard L Hall Elementary	686	0	0	686
367 Bill Hefner Elementary	720	0	0	720
368 Hope Mills Middle	0	552	0	552
369 John R Griffin Middle	0	1,184	0	1,184

* ADM is based on NCDPI data for 5th Month 2019-20



Cumberland County Schools

Average Daily Membership

UNIT: 260

2019-20 Average Daily Membership *

Name	Elem	Middle	High	Total
370 Ed V Baldwin Elementary	677	0	0	677
371 Ireland Drive Middle	0	305	0	305
372 Lewis Chapel Middle	0	613	0	613
373 Gallberry Farm Elementary	980	0	0	980
374 Alger B. Wilkins High School	0	0	136	136
375 Gray's Creek Elementary	441	0	0	441
380 Long Hill Elementary	494	0	0	494
382 Lucile Souders Elementary	412	0	0	412
383 Mac Williams Middle	0	1,185	0	1,185
386 Margaret Willis Elementary	314	0	0	314
388 Massey Hill Classical High	0	0	222	222
396 Mary McArthur Elementary	437	0	0	437
397 E Melvin Honeycutt Elementary	957	0	0	957
398 E E Miller Elementary	542	0	0	542
400 Montclair Elementary	434	0	0	434
401 Morganton Road Elementary	539	0	0	539
402 Manchester Elementary	370	0	0	370
403 New Century International Elementar	674	0	0	674
404 William H Owen Elementary	393	0	0	393
405 Walker-Spivey Elementary	253	0	0	253
406 Pine Forest Middle	0	801	0	801
407 Lake Rim Elementary	712	0	0	712
408 Pine Forest High	0	0	1,488	1,488
410 Ponderosa Elementary	380	0	0	380
411 Reid Ross Classical High	0	0	240	240
412 Raleigh Road Elementary	243	0	0	243
413 Howard Learning Academy	3	80	0	83
414 Benjamin J Martin Elementary	558	0	0	558
415 Rockfish Elementary	718	0	0	718
416 J W Seabrook Elementary	271	0	0	271
417 New Century International Middle	0	419	0	419
418 Seventy-First Classical Middle	0	479	0	479
419 Reid Ross Classical Middle	0	325	0	325
424 Seventy-First High	0	0	1,309	1,309
425 South View Middle	0	683	0	683
426 Sherwood Park Elementary	308	0	0	308
427 South View High	0	0	1,456	1,456

* ADM is based on NCDPI data for 5th Month 2019-20



Cumberland County Schools

Average Daily Membership

UNIT: 260

2019-20 Average Daily Membership *

Name	Elem	Middle	High	Total
428 Spring Lake Middle	0	475	0	475
430 Stedman Elementary	316	0	0	316
432 Stedman Primary	148	0	0	148
434 Stoney Point Elementary	1,015	0	0	1,015
440 Sunnyside Elementary	340	0	0	340
444 Teresa C Berrien Elementary	210	0	0	210
446 Terry Sanford High	0	0	1,140	1,140
448 Vanstory Hills Elementary	547	0	0	547
449 Ramsey Street High	0	0	98	98
450 Warrenwood Elementary	350	0	0	350
452 Westarea Elementary	523	0	0	523
454 Westover Middle	0	786	0	786
455 Westover High	0	0	1,008	1,008
459 William T Brown Elementary	292	0	0	292
700 Cumberland Polytechnic	0	0	278	278
Total:	23,542	11,491	14,392	49,425
2024-25 Projected:	23,097	11,117	16,228	50,442

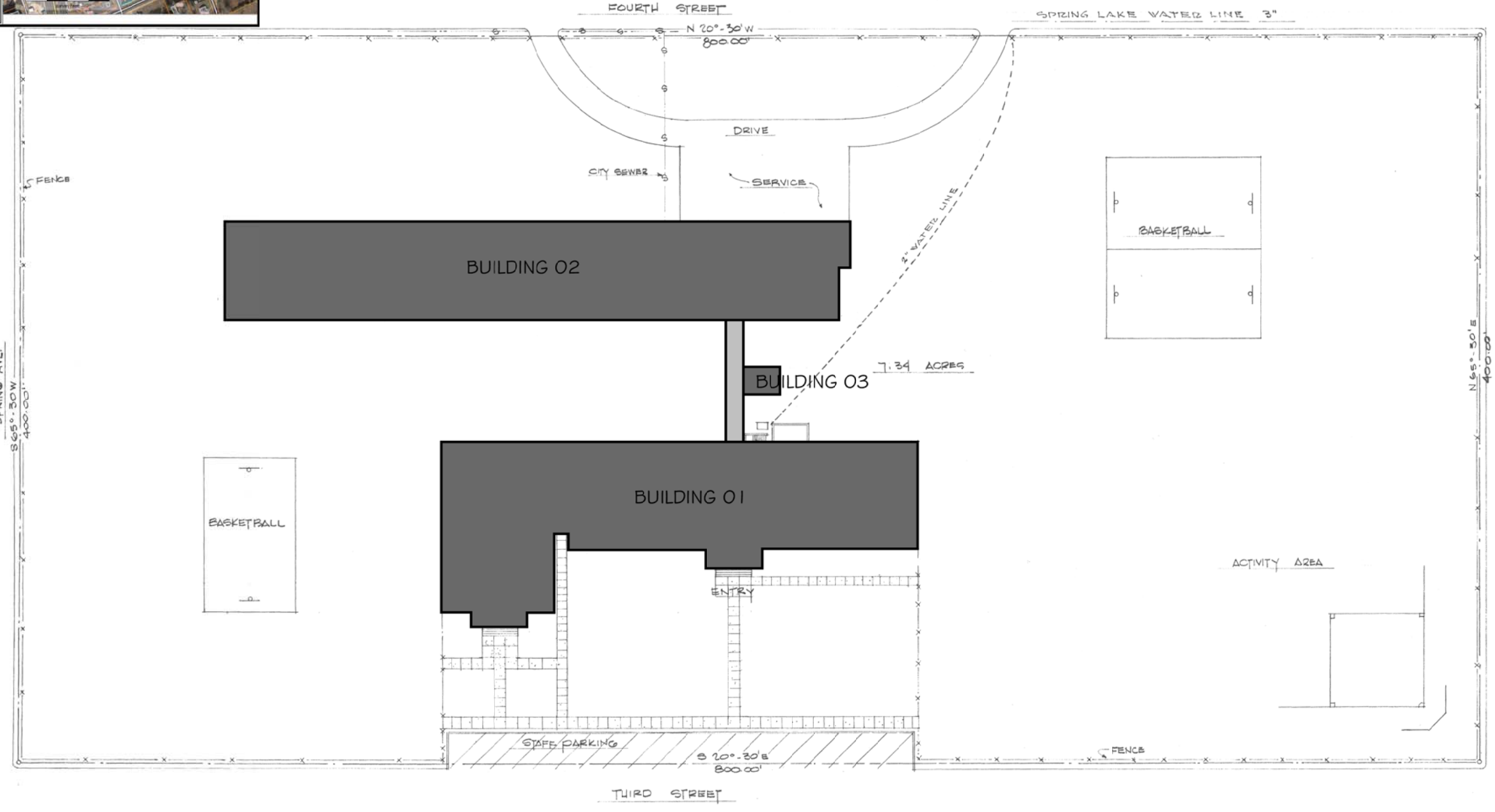
* ADM is based on NCDPI data for 5th Month 2019-20

Lillian Black Elementary School

093

UPDATED:
08-18-2011

Parcel:	
Value \$ / Pin#	0501-85-6719 - (1 of 1)
Parcel Details	
Pin	0501-85-6719
Owner Name	CUMBERLAND COUNTY BO OF ED
Owner Address	PO BOX 2367 FAYETTEVILLE NC 28302
Deed Book	00406
Deed Page	00212
Plat Book	0011
Plat Page	0003
Subdivision and Lot	SPRING LAKE
Total Assessment	\$0
Total Assessed Land Value	\$0
Total Assessed Build Value	\$0
Lot Frontage	400 ft
Lot Depth	800 ft
Calculated Acres	7.23
Deed Acreage	7.4
Year Sold	1984
Reg. Sq Ft	0
Sale Price	0
Hyperlink to Assessor Data? (1 of 1)	



PLOT PLAN	
Total Area	7.4 Acres
Scale =	

Name of Admin. Unit
CUMBERLAND COUNTY
BOARD OF EDUCATION
FAYETTEVILLE, N. C.

Name of Building(s)
1- ADMINISTRATION - CLASSROOM - AUD.
2- CLASSROOM - CAFETERIA
3- STORAGE

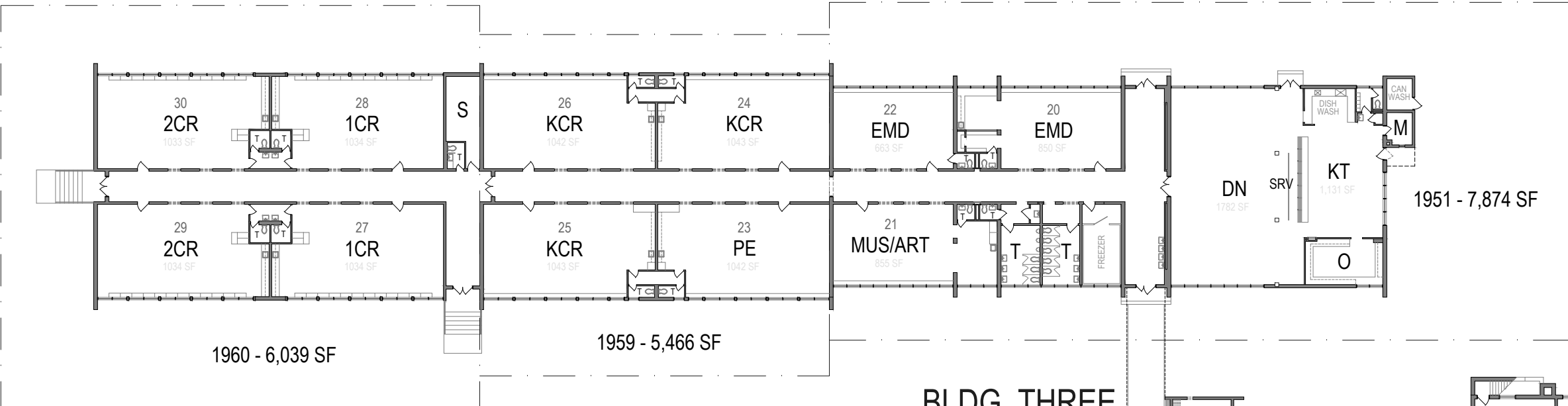
Name of School
Street Name / No.
Mailing Address

LILLIAN BLACK ELEMENTARY SCHOOL
125 SOUTH THIRD STREET
SPRING LAKE, NC 28390

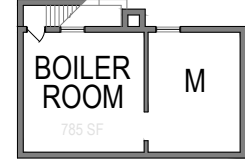
Unit / School No.
260-316
Building(s) No.
01-02-03

Sheet
1
Of
2

BLDG. TWO

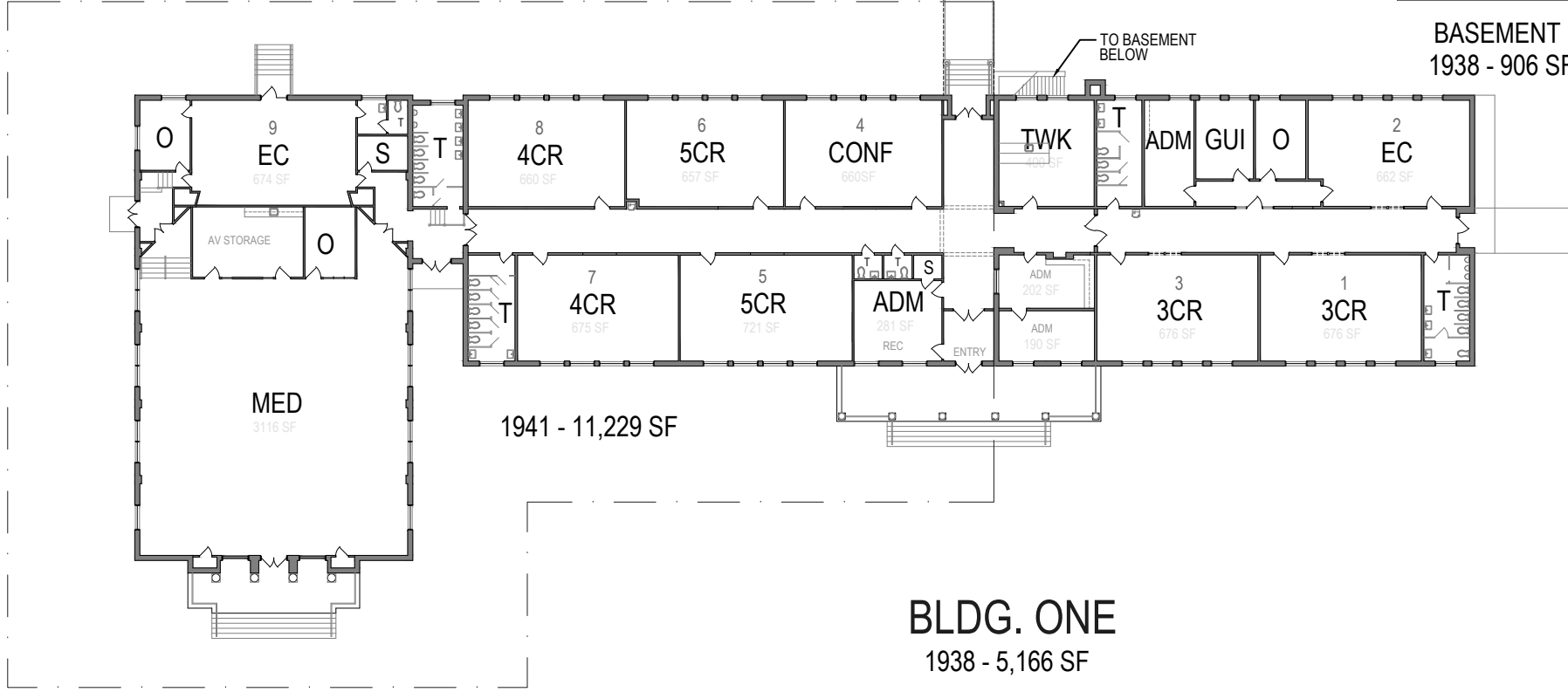


BLDG. THREE
UNKNOWN - 262 SF



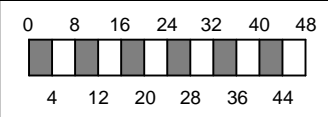
BASEMENT
1938 - 906 SF

AREA SUMMARY			
BUILDING NO.	YEAR	AREA	TOTAL
ONE	1938	6,072 SF	17,301 SF
	1941	11,229 SF	
TWO	1951	7,874 SF	19,379 SF
	1959	5,466 SF	
	1960	6,039 SF	
THREE	UNKNOWN	292 SF	292 SF
TOTAL		36,972 SF	



KEY			
ADM	ADMINISTRATIVE SUITE	T	TOILETS
GUI	GUIDANCE SUITE	O	OFFICE
CONF	CONFERENCE ROOM	M/S	MATH AND SCIENCE ROOM
KCR	KINDERGARTEN CLASSROOM	J	JANITORIAL
1CR	FIRST GRADE CLASSROOM	S	STORAGE
2CR	SECOND GRADE CLASSROOM	M	MECHANICAL ROOM
3CR	THIRD GRADE CLASSROOM	E	ELECTRICAL ROOM
4CR	FOURTH GRADE CLASSROOM	LGE	TEACHER'S LOUNGE
5CR	FIFTH GRADE CLASSROOM	EC	EXCEPTIONAL CHILDREN
TTL-1	TITLE ONE CLASSROOM	RES	RESOURCE ROOM
CL	COMPUTER LAB	BED	BEHAVIORAL / EMOTIONALLY DISABLED
KT	KITCHEN	EMD	EDUCABLE MENTALLY DISABLED
DN	DINING / CAFETERIA	MUS	MUSIC ROOM
SVR	SERVERY	ART	ART CLASSROOM
MED	MEDIA CENTER	MP	MULTI-PURPOSE ROOM
SS	STUDENT SERVICES	TWK	TEACHER WORK ROOM

SCALE



SHOWN THIS SHEET
Floor Plans

UNIT - SCHOOL NO.
260-316



Lillian Black Elementary

School: Lillian Black Elementary

School No: 260-316

Type: Elementary

Grades: 0K-05

Current ADM 217

Add New School

Delete School

Teaching Stations in Mobile Units: (mobiles/temp. bldgs. for educational use at this school)

Undo Changes

Save and Close Form

	Pre - K	K - 5	6 - 8	9 - 12	Total K-12
Current Capacity		274			274

(Include the capacity of new schools and additions that are under construction or funded in the "Current Capacity")

0 - 5 Year Project Needed

Project Needed: Addition/Renovation

Priority: 1 Immediate Needs

6 - 10 Year Project Needed

Project Needed: Renovations

Priority: 4 9-10 Year Needs

5 Years Planned Capacity

Pre - K	K - 5	6 - 8	9 - 12	Total K-12
	274			274

(Capacity planned to accomodate projected enrollment 2025-26)

Justifications: (Why are these improvements needed?)

- Depreciation/ Deferred Maintenance
- Air Conditioning / Energy Conservation

Notes/ Description:

10 Years Planned Capacity

Pre - K	K - 5	6 - 8	9 - 12	Total K-12
	274			274

(Capacity planned to accomodate projected enrollment 2030-31)

Justifications: (Why are these improvements needed?)

- Depreciation/ Deferred Maintenance
-

Notes/ Description:



Lillian Black Elementary

School No: 260316

Date: 9/1/2020

School Capacity

Form Instructions: Enter the number of classrooms and other spaces. Include additions and new schools that are under construction or in the design phase.

Pre-K	Quantity	Capacity
Pre-K Classrooms		

Note: The capacity of Pre-K Classrooms is NOT included in the school capacity totals.

	Classrooms/Spaces			Capacity		
	Elem	Middle	High	Elem	Middle	High
Kindergartens	3			54		
Grade 1	3			48		
Grades 2-3	4			68		
Grades 4-5	4			104		
LA/SS/Math Classrooms						
Math / Science Classrooms						
Science Labs						
Science Classrooms						
Exception S/C						
Resource		3				
4+ Computers in each room?		<input checked="" type="checkbox"/> Yes?				
Computer Rooms						

Arts Education	Elem	Middle	High			
Visual Arts						
Dance / Drama						
General Music	1					
Instrumental Music (Band)						
Vocal Music (Chorus)						
Subtotal - Arts	1					

Scroll Down

Vocational	Elem	Middle	High			
Keyboarding Labs						
Prevocational Labs						
Business / Office Ed.						
Service / Marketing						
Technology Labs						
Agri / Trade + Ind						



Lillian Black Elementary School No: 260316 Date: 9/1/2020

Physical Education, etc.	Elem	Middle	High		
P.E. / Multi / Gymnasium	<input checked="" type="checkbox"/>	<input type="checkbox"/>	<input type="checkbox"/>		
Gym Seating					
Auxilliary Gym		<input type="checkbox"/>	<input type="checkbox"/>		
Health / P.E.					
Weight Room					
Wrestling					
ROTC					
Capacity Totals (sum from the capacity above):				274	0
Capacity Totals (sum from Capacity Plan form):				274	0



Lillian Black Elementary

School No: 260316

Date: 9/1/2020

Core Capacity

Media Center	Facilities		Capacity
Media RLV Area:	3,116	sq.ft. / 4 =	779
Media Support Area:	<input checked="" type="radio"/> Sm <input type="radio"/> OK <input type="radio"/> Good		

Dining and Kitchen	Facilities		Capacity
Dining Area	1,782	sq.ft. / 4 =	446
Kitchen Area:	<input checked="" type="radio"/> Small <input type="radio"/> OK <input type="radio"/> Good		
# of Serving Lines:	1		
Minimum Core Capacity:			446

Auditorium	Facilities		
Auditorium:	<input type="checkbox"/> Yes?		
# of Seats:			
Admin/Guidance Area:	<input checked="" type="radio"/> Small <input type="radio"/> OK <input type="radio"/> Good		



Lillian Black Elementary

School No: 260316

Date: 2/28/2022

General Building Information

Form Instructions: Enter building construction history for this school. For example, original building, classroom addition, mini-gym addition, etc. Also complete the requested information concerning the particular construction..

Building Construction History

For definition Press Condition or Accessibility

Table with 5 columns: Building, Year Built, SF Area, Condition, Accessibility. Rows include One - Main Building, Two - Classrooms/Cafeteria, Two - Classrooms, Two - Classrooms, Three - Tractor Storage.

Summary table for School Total Area (SF: 36972) and School Site Acreage (7). Includes instructions to enter total square feet and acreage.

Utility Costs

Complete the following utility cost for FY 2019-20. If there are solar arrays on the site or school roof, complete Solar Energy section.

Utility Cost and Solar Energy tables. Includes columns for ELEC, GAS, WATER / SEWER, USED, and SOLD TO UTILITY.

Scroll Down

Mobile Units

Note: The capacity of mobile classroom units is NOT included in the school capacity totals.

Mobile Units table with columns for Mobile Units Type, No, Teaching Stations, no., and Capacity. Includes rows for Single Wide, Double Wide, Mega-module, and Total from Above.



2020-21 DPI Facility Needs Survey Schools Questionnaire

School No: **260-316** School: **Lillian Black Elementary**

Type: **Elementary** Grades: **0K-05** Current ADM **217**

General Information Survey (this school)

<input type="text" value="traditional school"/>	1. Operational calendar.
<input type="text"/>	2. For high schools, provide current scheduling format.
<input type="text" value="None"/>	3. Does this school have a special programmatic focus: Magnet / CTE / IB / Early College, etc.?
<input type="text" value="Yes"/>	4. Are all science labs at this school in compliance with NCDPI's Science Safety Checklist? https://files.nc.gov/dpi/documents/schoolplanning/science-safety-checklist.pdf
<input type="text" value="Yes"/>	5. Does the main entrance at this school include a Security Vestibule to control visitor entry?
<input type="text" value="Yes"/>	6. Is the main office at this school equipped with the required Silent Panic Alarm to directly call emergency first responders?
<input type="text" value="Staff"/>	7. Staff or private janitorial services?
<input type="text" value="No"/>	8. LEED certification? (any buildings)
<input type="text" value="0"/>	9. Number of mobile units on this campus - in use?
<input type="text" value="0"/>	10. Number of mobile units on this campus - out of use?
<input type="text" value="0"/>	11. Number of SROs?
<input type="text" value="1"/>	12. Number of School Nurses?
<input type="text" value="1"/>	13. Number of Assistant Principals?
<input type="text" value="1"/>	14. Number of School Counselors?
<input type="text" value="87976"/>	15. Total expenditures for Capital Projects last 5 years? (this campus)



2020-21 DPI Facility Needs Survey Schools Questionnaire

School No: **260-316** School: **Lillian Black Elementary**

Type: **Elementary** Grades: **0K-05** Current ADM **217**

Special Programs / Facilities Survey (this campus)

- No 16. Pre-K? (not child care)
- 17. CTE programs?
- No 18. Auto body/paint shop?
- No 19. Auto repair shop?
- No 20. JROTC program?
- No 21. Shooting range?
- No 22. Greenhouse?
- No 23. Swimming pool?
- No 24. Fire training facility?
- 25. List any other specialty programs and/or facilities.

Shared Campus Usage Survey (this campus)

- No 26. Alternative school?
- 27. Childcare Facility? (not Pre-K)
- No 28. Lunch prepared on this site for transport to other schools?
- No 29. Community College use?
- No 30. Parks and Recreation use?
- No 31. Public Library use?
- No 32. Community Health Clinic?
- No 33. Designation as a storm shelter / emergency shelter?
- No 34. Site serves as a regional bus facility?
- 35. List any other critical / shared facility services operating under an MOU?



2020-21 DPI Facility Needs Survey Schools Questionnaire

School No: **260-316** School: **Lillian Black Elementary**

Type: **Elementary** Grades: **0K-05** Current ADM **217**

Campus Infrastructure Survey (this campus)

- 36. Oldest building on campus - year built?
- 37. Newest building on campus - year built?
- 38. Year of most recent renovation?
- 39. Are there retaining walls on site?
- 40. Water service provider?
- 41. Sewer service provider?
- 42. Emergency generator use?
- 43. Fossil fuel type used on this campus?
- 44. Underground fuel storage tanks remaining?
- 45. Is campus totally abated / known to be free of asbestos, lead, etc.?
- 46. Any all-wood constructed educational buildings on campus?
- 47. Use of any PV / solar arrays?
- 48. Bus lot with parking for local route only?
- 49. Technology / Broadband service type?
- 50. Percentage of students with reliable home internet connection?
- 51. Status of named storm damage repairs, if any?
- 52. Has campus ever been closed long term due to damage from a catastrophic event such as fire, tornado, hurricane, flooding?



Lillian Black Elementary

School Number: **260-316**

Planned Capacity: **274**

Priority: **1**

Pre-K Capacity: **0**

Additions		Date: 10/1 /2020			Estimated Cost	
Academic Classrooms		Elem	Middle	High	Area (sf)	
Pre-K Clrms:						
Kindergartens:						
Grades 1 Clrms:						
Grades 2-3 Clrms:						
Grades 4-5* Clrms:						
LA/SS/Math Clrms:						
Math/Sci Clrms:						
Science Labs:						
Science Classrooms:						
Exceptional (self-contained):						
Resource:						
Computer Rooms:						
Arts Education		Elem	Middle	High		
Visual Arts:						
General Music:						
Instrumental Music (band):						
Vocal Music (chorus):						
Dance/Drama:						
Vocational		Elem	Middle	High		
Keyboarding Labs:						
Prevocational Labs:						
Business/Office Ed:						
Service/Marketing:						
Technology Labs:						
Agri/Trade+Ind:						
Physical Education,etc		Elem	Middle	High		
P.E./ Multi/ Main Gymnasium:	<input checked="" type="checkbox"/>	<input type="checkbox"/>	<input type="checkbox"/>	<input type="checkbox"/>	4,200 s.f. X \$325.00 per sq. ft. =	1,365,000
Auxiliary Gym:		<input type="checkbox"/>	<input type="checkbox"/>	<input type="checkbox"/>	Check to add new facility	
Health/P.E. Clrms:						
Weight Room:						
Wrestling:						
Core Facilities						
Media RLV Area:	<input type="checkbox"/>	<input type="checkbox"/>	<input type="checkbox"/>	<input type="checkbox"/>		
Media Support Area:						
Dining Area:		<input type="checkbox"/>				
Kitchen Area:						
# of Serving Lines:						
Auditorium:			<input type="checkbox"/>			
Admin/Guidance Area:						
Other/misc. Area:						
Subtotals:					4,200 s.f.	1,365,000
Bldg. Support/Circulation:					1,470 s.f. X \$250.00 per sq. ft. =	367,500
Total Area (s.f.) Added:					5,670	Const. Cost (\$305.56/s.f.): \$1,732,500
Demolition of Existing Buildings:					s.f.	
Contingency:					(4.5% of Const. Cost)	86,625
Admin. and Design Fees:					(7.5% of Const. Cost)	129,938
					Total for Additions:	\$1,949,062
*Base-line Cost/ sq.ft.: \$250						
Land Purchase						
Additional Land Needed:			Acres x \$		/Acre =	



Lillian Black Elementary

School Number: **260-316**

Planned Capacity: **274**

Priority: **1**

Pre-K Capacity: **0**

Renovations

Site Improvements	Size/ Amount	Notes/ Description	Cost
Parking/ Drives:\$	79,870	Resurface all lots & drives	79,870
Sewer System:	<input type="checkbox"/>	Check box to add sewer system.	
Water System (well):	<input type="checkbox"/>	Check box to add a well.	
Grading/ Drainage:\$			
Canopy (cov. walk):		s.f.	
Other Sitework (describe):\$	75,000	Add new parking lot	75,000
Building/ Exterior/ Structure			
Roof Replacement:	21,200	s.f. X \$9.90 per sq. ft. =	209,880
Structural Repairs:\$			
Window Replacement:	3,888	s.f. X \$73.70 per sq. ft. =	286,546
Masonry/ Ext. Wall Repairs:\$	193,861	Point brick walls	193,861
Other Bldg/Exterior (describe):\$	97,328	Exterior paint & replace exterior doors	97,328
Interior/ Finishes			
Partition/Wall Construction:\$	12,000	Plaster wall repairs	12,000
Ceilings:		s.f.	
Flooring:	25,092	s.f. X \$5.31 per sq. ft. =	133,164
Painting:	36,680	s.f. X \$1.80 per sq. ft. =	66,024
Other Bldg/Interior (describe):\$	91,000	Interior Doors	91,000
Plumbing/ HVAC/ Electrical			
Air Conditioning:		s.f.	195,866
Electrical Service:		s.f.	116,000
Lighting:	36,680	s.f. X \$8.00 per sq. ft. =	293,440
Computer/ Tech. Wiring:		s.f.	
Plumbing:\$	45,414	Water Distribution, Water Heaters	45,414
Other Plbg/HVAC/Elec.(describe):\$	25,000	EMS on Boiler	25,000
Bldg. Code/ Life Safety			
Bldg. Code/ Life Safety:\$			
ADA Ramps/H.C. Access:\$			
ADA Toilet Renovations:\$			
Fire Alarm:\$	75,000	Replace Fire Alarm System	75,000
Sprinkler System:		s.f.	
Other Code/Safety (describe):\$	10,000	Security enhancement to core facilities	10,000
Hazardous Mat'l/ Environmental			
Hazardous Matl. Abatement:\$	53,836	Asbestos Abatement	53,836
Indoor Air Quality:\$			
Inground Fuel Tanks:\$			
Radon Management:\$			
Other Environmental (describe):\$			
Other Renovations (not incl. above)			
Other Renovations (describe)1.\$	2,750,000	Major Renovation - other	2,750,000
2.\$	220,800	Resurface & Replace Playgrounds	220,800
3.\$	7,500	Toilet partitions	7,500
Subtotal:			5,037,529
Contingency (5.5% of renovation cost):			503,753
Admin. and Design Fees (8.5% of renovation cost):			428,190
Total Renovation Cost:			\$5,969,472



Lillian Black Elementary

School Number: 260-316

Planned Capacity: 274

Priority: 1

Pre-K Capacity: 0

Furnishings/ Equipment

Furn./ Eqpt. for Addition*:		\$1,732,500 x 0.094. =	162,855
Kitchen Equipment:	<input type="checkbox"/>	Check to add kitchen equipment	
Media Center Furnishings*:	<input type="checkbox"/>	Check to add media center furnishings	
Other Furn./ Eqpt. (describe):	47,300	Walk-in Cooler/Freezer	47,300
Total Furn./ Eqpt.			\$210,155

Total Cost of Additions and Renovations: \$8,128,689

Notes/Comments:

Justifications Why are these improvements needed?

1. Depreciation/ Deferred Maintenance
2. Air Conditioning / Energy Conservation

Funding

Likelihood that County will fund project: Very Unlikely

If "Very Unlikely," why will County funding not be available? Current available funding is limited and not sufficient to fund all the identified needs.

What other funding sources are available for the project? None



Lillian Black Elementary

School Number: **260-316**

Planned Capacity: **274**

Priority: **4**

Pre-K Capacity: **0**

Additions

Date: **10/1 /2020**

**Estimated
Cost**

Academic Classrooms	Elem	Middle	High	Area (sf)	
Pre-K Clrms:					
Kindergartens:					
Grades 1 Clrms:					
Grades 2-3 Clrms:					
Grades 4-5* Clrms:					
LA/SS/Math Clrms:					
Math/Sci Clrms:					
Science Labs:					
Science Classrooms:					
Exceptional (self-contained):					
Resource:					
Computer Rooms:					
Arts Education	Elem	Middle	High		
Visual Arts:					
General Music:					
Instrumental Music (band):					
Vocal Music (chorus):					
Dance/Drama:					
Vocational	Elem	Middle	High		
Keyboarding Labs:					
Prevocational Labs:					
Business/Office Ed:					
Service/Marketing:					
Technology Labs:					
Agri/Trade+Ind:					
Physical Education,etc	Elem	Middle	High		
P.E./ Multi/ Main Gymnasium:	<input type="checkbox"/>	<input type="checkbox"/>	<input type="checkbox"/>		Check to add new facility
Auxiliary Gym:		<input type="checkbox"/>	<input type="checkbox"/>		Check to add new facility
Health/P.E. Clrms:					
Weight Room:					
Wrestling:					
Core Facilities					
Media RLV Area:	<input type="checkbox"/>	<input type="checkbox"/>	<input type="checkbox"/>		
Media Support Area:					
Dining Area:		<input type="checkbox"/>			
Kitchen Area:					
# of Serving Lines:					
Auditorium:			<input type="checkbox"/>		
Admin/Guidance Area:					
Other/misc. Area:					
Subtotals:					
Bldg. Support/Circulation:					
Total Area (s.f.) Added:					Const. Cost:
Demolition of Existing Buildings:					s.f.
Contingency:					
Admin. and Design Fees:					
*Base-Line Cost/ sq.ft.: \$250				Total for Additions:	

Land Purchase

Additional Land Needed: Acres x \$ /Acre =



Lillian Black Elementary

School Number: 260-316

Planned Capacity: 274

Priority: 4

Pre-K Capacity: 0

Renovations

Site Improvements	Size/ Amount	Notes/ Description	Cost
Parking/ Drives:\$			
Sewer System:	<input type="checkbox"/>	Check box to add sewer system.	
Water System (well):	<input type="checkbox"/>	Check box to add a well.	
Grading/ Drainage:\$			
Canopy (cov. walk):		s.f.	
Other Sitework (describe):\$			
Building/ Exterior/ Structure			
Roof Replacement:		s.f.	
Structural Repairs:\$			
Window Replacement:		s.f.	
Masonry/ Ext. Wall Repairs:\$			
Other Bldg/Exterior (describe):\$			
Interior/ Finishes			
Partition/Wall Construction:\$			
Ceilings:		s.f.	
Flooring:		s.f.	
Painting:		s.f.	
Other Bldg/Interior (describe):\$			
Plumbing/ HVAC/ Electrical			
Air Conditioning:		s.f.	13,572
Electrical Service:		s.f.	
Lighting:		s.f.	
Computer/ Tech. Wiring:		s.f.	
Plumbing:\$	6,500	Backflow, Storage Tank	6,500
Other Plbg/HVAC/Elec.(describe):\$			
Bldg. Code/ Life Safety			
Bldg. Code/ Life Safety:\$			
ADA Ramps/H.C. Access:\$			
ADA Toilet Renovations:\$			
Fire Alarm:\$			
Sprinkler System:		s.f.	
Other Code/Safety (describe):\$			
Hazardous Mat'l/ Environmental			
Hazardous Matl. Abatement:\$			
Indoor Air Quality:\$			
Inground Fuel Tanks:\$			
Radon Management:\$			
Other Environmental (describe):\$			
Other Renovations (not incl. above)			
Other Renovations (describe)1.\$	325,000	Upgrade HVAC System to BARDS	325,000
2.\$			
3.\$			
Subtotal:			345,072
Contingency (5.5% of renovation cost):			34,507
Admin. and Design Fees (8.5% of renovation cost):			29,331
Total Renovation Cost:			\$408,910



Lillian Black Elementary

School Number: 260-316

Planned Capacity: 274

Priority: 4

Pre-K Capacity: 0

Furnishings/ Equipment

Furn./ Eqpt. for Addition*:		
Kitchen Equipment:	<input type="checkbox"/>	Check to add kitchen equipment
Media Center Furnishings*:	<input type="checkbox"/>	Check to add media center furnishings
Other Furn./ Eqpt. (describe):		
Total Furn./ Eqpt.		<input type="text"/>

Total Cost of Additions and Renovations: \$408,910

Notes/Comments:

Justifications: (Why are these improvements needed?)

1.
2.



School Planning

NC Department of Public Instruction
Safe and Healthy Schools Division



Cumberland County Schools Capacity Summary & Plan (0 to 5 years)

UNIT: 260			ADM 2019-20	Current Capacity					Mobile	Teach Station	Needs	Planned Capacity (future)				
				Pre-K	K-5	Middle	High	K-12				Pre-K	K-5	Middle	High	K-12
260	101	New High School		0	0	0	0	0	0	0	New School	0	0	0	1,200	1,200
260	102	North Elementary		0	0	0	0	0	0	0	New School	36	300	0	0	300
260	302	Alma O Easom Element	290	0	272	0	0	272	0	0	Renovations	0	272	0	0	272
260	306	Armstrong Elementary	404	18	441	0	0	441	0	0	Renovations	18	441	0	0	441
260	308	Ashley Elementary	194	0	297	0	0	297	0	0	Renovations	0	297	0	0	297
260	310	Loyd E Auman Element	500	18	528	0	0	528	1	1	Renovations	18	528	0	0	528
260	312	Beaver Dam Elementar	89	0	95	0	0	95	2	2	Addition/Renovation	0	95	0	0	95
260	316	Lillian Black Elementary	217	0	274	0	0	274	0	0	Addition/Renovation	0	274	0	0	274
260	318	Jack Britt High	1,864	0	0	0	1,929	1,929	2	2	Renovations	0	0	0	1,929	1,929
260	320	Brentwood Elementary	476	36	435	0	0	435	5	3	Addition/Renovation	36	435	0	0	435
260	321	Douglas Byrd Middle	546	0	0	768	0	768	0	0	Renovations	0	0	768	0	768
260	322	Douglas Byrd High	967	0	0	0	1,466	1,466	1	0	Renovations	0	0	0	1,466	1,466
260	325	Cape Fear High	1,372	0	0	0	1,476	1,476	8	7	Addition/Renovation	0	0	0	1,764	1,764
260	326	Elizabeth M Cashwell El	598	36	624	0	0	624	7	2	Addition/Renovation	36	624	0	0	624
260	332	Eastover-Central Eleme	387	18	480	0	0	480	2	0	Addition/Renovation	18	480	0	0	480
260	336	Anne Chesnutt Middle	513	0	0	739	0	739	0	0	Renovations	0	0	739	0	739
260	338	Cliffdale Elementary	574	54	581	0	0	581	4	1	Renovations	54	581	0	0	581
260	340	College Lakes Elementa	497	0	386	0	0	386	6	5	Renovations	0	386	0	0	386
260	342	C Wayne Collier Eleme	500	72	580	0	0	580	2	0	Renovations	72	580	0	0	580
260	344	J W Coon Elementary	189	0	339	0	0	339	0	0	Addition/Renovation	0	339	0	0	339
260	347	Cumberland Internation	269	0	0	0	286	286	0	0	None Needed	0	0	0	286	286
260	348	Cumberland Mills Eleme	617	18	627	0	0	627	3	3	Addition/Renovation	18	627	0	0	627
260	352	Cumberland Road Elem	331	18	461	0	0	461	1	0	Renovations	18	461	0	0	461
260	354	Cross Creek Early Colle	274	0	0	0	286	286	0	0	None Needed	0	0	0	286	286
260	356	District No 7 Elementary	259	18	307	0	0	307	2	0	Renovations	18	307	0	0	307
260	357	Gray's Creek High	1,400	0	0	0	1,517	1,517	0	0	Addition/Renovation	0	0	0	1,829	1,829
260	358	Luther Nick Jeralds Mid	596	0	0	716	0	716	3	0	Renovations	0	0	716	0	716
260	359	E E Smith High	871	0	0	0	1,406	1,406	0	0	Renovations	0	0	0	1,406	1,406
260	361	Ferguson-Easley Eleme	274	0	396	0	0	396	1	1	Addition/Renovation	0	396	0	0	396



2020-21 DPI Facility Needs Survey

Capacity Summary 0 to 5 Years

260	362	Gray's Creek Middle	1,145	0	0	1,083	0	1,083	2	0	Renovations	0	0	1,083	0	1,083
260	363	Glendale Acres Element	222	18	230	0	0	230	1	0	Addition/Renovation	18	230	0	0	230
260	364	Alderman Road Elemen	667	54	707	0	0	707	0	0	Addition/Renovation	72	846	0	0	846
260	365	R Max Abbott Middle	804	0	0	950	0	950	0	0	Renovations	0	0	950	0	950
260	366	Howard L Hall Elementa	686	0	575	0	0	575	11	8	Addition/Renovation	0	575	0	0	575
260	367	Bill Hefner Elementary	720	18	817	0	0	817	5	2	Renovations	18	817	0	0	817
260	368	Hope Mills Middle	552	0	0	680	0	680	0	0	Renovations	0	0	680	0	680
260	369	John R Griffin Middle	1,184	0	0	1,273	0	1,273	0	0	Renovations	0	0	1,273	0	1,273
260	370	Ed V Baldwin Elementar	677	36	638	0	0	638	6	3	Addition/Renovation	36	638	0	0	638
260	371	Ireland Drive Middle	305	0	0	326	0	326	3	2	Addition/Renovation	0	0	326	0	326
260	372	Lewis Chapel Middle	613	0	0	691	0	691	1	1	Renovations	0	0	691	0	691
260	373	Gallberry Farm Element	980	36	884	0	0	884	7	5	Addition/Renovation	54	1,023	0	0	1,023
260	374	Alger B. Wilkins High Sc	136	0	0	0	320	320	0	0	Renovations	0	0	0	320	320
260	375	Gray's Creek Elementar	441	18	432	0	0	432	3	0	Renovations	18	432	0	0	432
260	380	Long Hill Elementary	494	0	516	0	0	516	1	0	Renovations	0	516	0	0	516
260	382	Lucile Souders Element	412	36	400	0	0	400	1	1	Addition/Renovation	36	400	0	0	400
260	383	Mac Williams Middle	1,185	0	0	1,164	0	1,164	1	0	Renovations	0	0	1,164	0	1,164
260	386	Margaret Willis Element	314	18	294	0	0	294	3	2	Addition/Renovation	18	294	0	0	294
260	388	Massey Hill Classical Hi	222	0	0	0	538	538	1	1	Renovations	0	0	0	538	538
260	396	Mary McArthur Element	437	36	520	0	0	520	2	0	Addition/Renovation	36	520	0	0	520
260	397	E Melvin Honeycutt Ele	957	0	892	0	0	892	5	3	Renovations	0	892	0	0	892
260	398	E E Miller Elementary	542	36	703	0	0	703	1	0	Renovations	36	703	0	0	703
260	400	Montclair Elementary	434	18	465	0	0	465	4	1	Addition/Renovation	18	465	0	0	465
260	401	Morganton Road Eleme	539	0	601	0	0	601	2	0	Addition/Renovation	0	601	0	0	601
260	402	Manchester Elementary	370	0	386	0	0	386	3	2	Addition/Renovation	0	386	0	0	386
260	403	New Century Internation	674	54	736	0	0	736	0	0	Renovations	54	736	0	0	736
260	404	William H Owen Elemen	393	36	480	0	0	480	1	0	Renovations	36	480	0	0	480
260	405	Walker-Spivey Element	253	18	310	0	0	310	3	2	Renovations	18	310	0	0	310
260	406	Pine Forest Middle	801	0	0	804	0	804	0	0	Renovations	0	0	804	0	804
260	407	Lake Rim Elementary	712	36	695	0	0	695	2	0	Renovations	36	695	0	0	695
260	408	Pine Forest High	1,488	0	0	0	1,712	1,712	3	0	Renovations	0	0	0	1,712	1,712
260	410	Ponderosa Elementary	380	36	356	0	0	356	3	3	Addition/Renovation	36	356	0	0	356
260	411	Reid Ross Classical Hig	240	0	0	0	610	610	0	0	Renovations	0	0	0	610	610



2020-21 DPI Facility Needs Survey

Capacity Summary 0 to 5 Years

260	412	Raleigh Road Elementa	243	0	179	0	0	179	2	2	Addition/Renovation	0	179	0	0	179
260	413	Howard Learning Acade	83	0	0	166	0	166	2	0	Renovations	0	0	166	0	166
260	414	Benjamin J Martin Elem	558	36	485	0	0	485	7	3	Addition/Renovation	36	485	0	0	485
260	415	Rockfish Elementary	718	18	799	0	0	799	2	0	Addition/Renovation	18	799	0	0	799
260	416	J W Seabrook Elementa	271	18	267	0	0	267	2	1	Renovations	18	267	0	0	267
260	417	New Century Internation	419	0	0	602	0	602	0	0	Renovations	0	0	602	0	602
260	418	Seventy-First Classical	479	0	0	523	0	523	3	2	Renovations	0	0	523	0	523
260	419	Reid Ross Classical Mid	325	0	0	444	0	444	0	0	None Needed	0	0	444	0	444
260	424	Seventy-First High	1,309	0	0	0	2,062	2,062	3	1	Addition/Renovation	0	0	0	2,062	2,062
260	425	South View Middle	683	0	0	847	0	847	0	0	Renovations	0	0	847	0	847
260	426	Sherwood Park Element	308	18	433	0	0	433	4	1	Addition/Renovation	18	433	0	0	433
260	427	South View High	1,456	0	0	0	1,871	1,871	3	3	Renovations	0	0	0	1,871	1,871
260	428	Spring Lake Middle	475	0	0	664	0	664	0	0	Renovations	0	0	664	0	664
260	430	Stedman Elementary	316	0	358	0	0	358	0	0	Addition/Renovation	0	358	0	0	358
260	432	Stedman Primary	148	36	162	0	0	162	0	0	Addition/Renovation	72	505	0	0	505
260	434	Stoney Point Elementar	1,015	0	826	0	0	826	11	11	Addition/Renovation	18	965	0	0	965
260	440	Sunnyside Elementary	340	0	303	0	0	303	7	4	Addition/Renovation	0	303	0	0	303
260	444	Teresa C Berrien Eleme	210	0	294	0	0	294	0	0	Renovations	0	294	0	0	294
260	446	Terry Sanford High	1,140	0	0	0	1,468	1,468	0	0	Renovations	0	0	0	1,468	1,468
260	448	Vanstory Hills Elementa	547	0	585	0	0	585	1	1	Addition/Renovation	0	585	0	0	585
260	449	Ramsey Street High	98	0	0	0	369	369	4	0	Renovations	0	0	0	369	369
260	450	Warrenwood Elementar	350	54	408	0	0	408	3	2	Addition/Renovation	54	408	0	0	408
260	452	Westarea Elementary	523	18	614	0	0	614	0	0	Addition/Renovation	18	614	0	0	614
260	454	Westover Middle	786	0	0	819	0	819	0	0	Renovations	0	0	819	0	819
260	455	Westover High	1,008	0	0	0	1,352	1,352	3	1	Renovations	0	0	0	1,352	1,352
260	459	William T Brown Eleme	292	72	666	0	0	666	0	0	Renovations	72	666	0	0	666
260	700	Cumberland Polytechnic	278	0	0	0	286	286	0	0	None Needed	0	0	0	286	286

Totals: 49,425 1,080 25,139 13,259 18,954 57,352 182 95 1,206 26,199 13,259 20,754 60,212

	<u>K-5</u>	<u>Middle</u>	<u>High</u>	<u>K-12</u>		<u>K-5</u>	<u>Middle</u>	<u>High</u>	<u>K-12</u>
Current Capacity:	25,139	13,259	18,954	57,352	Total Capacity:	26,199	13,259	20,754	60,212
ADM 2019-20:	23,542	11,491	14,392	49,425	Proj Enrollment 2024-25:	23,097	11,117	16,228	50,442
Difference:	1,597	1,768	4,562	7,927	Difference:	3,102	2,142	4,526	9,770



2020-21 DPI Facility Needs Survey

Capacity Summary 6 to 10 Years

Cumberland County Schools Capacity Summary & Plan (6 to 10 years)

UNIT: 260		ADM 2019-20	Current Capacity				Mobile	Teach Station	Needs	Planned Capacity (future)				
			Pre-K	K-5	Middle	High				K-12	High	Middle	K-12	
260 101	New High School		0	0	0	0	0	None Needed	0	0	0	0	1,200	1,200
260 102	North Elementary		0	0	0	0	0	None Needed	36	300	0	0	0	300
260 302	Alma O Easom Element	290	0	272	0	0	272	Renovations	0	272	0	0	0	272
260 306	Armstrong Elementary	404	18	441	0	0	441	Renovations	18	441	0	0	0	441
260 308	Ashley Elementary	194	0	297	0	0	297	Renovations	0	297	0	0	0	297
260 310	Lloyd E Auman Element	500	18	528	0	0	528	Renovations	18	528	0	0	0	528
260 312	Beaver Dam Elementar	89	0	95	0	0	95	Renovations	0	95	0	0	0	95
260 316	Lillian Black Elementary	217	0	274	0	0	274	Renovations	0	274	0	0	0	274
260 318	Jack Britt High	1,864	0	0	0	1,929	1,929	Renovations	0	0	0	0	1,929	1,929
260 320	Brentwood Elementary	476	36	435	0	0	435	Renovations	36	435	0	0	0	435
260 321	Douglas Byrd Middle	546	0	0	768	0	768	Renovations	0	0	768	0	0	768
260 322	Douglas Byrd High	967	0	0	0	1,466	1,466	Renovations	0	0	0	739	1,466	1,466
260 325	Cape Fear High	1,372	0	0	0	1,476	1,476	Renovations	0	0	0	0	1,764	1,764
260 326	Elizabeth M Cashwell El	598	36	624	0	0	624	Renovations	36	624	0	0	0	624
260 332	Eastover-Central Eleme	387	18	480	0	0	480	Renovations	18	480	0	0	0	480
260 336	Anne Chesnut Middle	513	0	0	739	0	739	Renovations	0	0	739	0	0	739
260 338	Cliffdale Elementary	574	54	581	0	0	581	Renovations	0	581	0	0	0	581
260 340	College Lakes Element	497	0	386	0	0	386	Renovations	0	386	0	0	0	386
260 342	C Wayne Collier Eleme	500	72	580	0	0	580	Renovations	72	580	0	0	0	580
260 344	J W Coon Elementary	189	0	339	0	0	339	Renovations	0	339	0	0	0	339
260 347	Cumberland Internation	269	0	0	0	286	286	None Needed	0	0	0	0	286	286
260 348	Cumberland Mills Elem	617	18	627	0	0	627	Renovations	18	627	0	0	0	627
260 352	Cumberland Road Elem	331	18	461	0	0	461	Renovations	18	461	0	0	0	461
260 354	Cross Creek Early Colle	274	0	0	0	286	286	None Needed	0	0	0	0	286	286
260 356	District No 7 Elementary	259	18	307	0	0	307	Renovations	18	307	0	0	0	307
260 357	Gray's Creek High	1,400	0	0	0	1,517	1,517	Renovations	0	0	0	0	1,829	1,829
260 358	Luther Nick Jerails Mid	596	0	0	716	0	716	Renovations	0	0	716	0	0	716
260 359	E E Smith High	871	0	0	0	1,406	1,406	Renovations	0	0	0	0	1,406	1,406



2020-21 DPI Facility Needs Survey

Capacity Summary 6 to 10 Years

Cumberland County Schools Capacity Summary & Plan (6 to 10 years)

	ADM 2019-20	UNIT: 260					Teach Station	Needs	Planned Capacity (future)						
		Current Capacity			Mobile				Pre-K	K-5	Middle	High	K-12		
		Pre-K	K-5	Middle	High	K-12									
260 361	Ferguson-Easley Eleme	274	0	396	0	0	396	1	1	Renovations	0	396	0	0	396
260 362	Gray's Creek Middle	1,145	0	0	1,083	0	1,083	0	2	Addition/Renovation	0	0	1,395	0	1,395
260 363	Glendale Acres Element	222	18	230	0	0	230	0	1	Renovations	18	230	0	0	230
260 364	Alderman Road Elemen	667	54	707	0	0	707	0	0	Renovations	72	846	0	0	846
260 365	R Max Abbott Middle	804	0	0	950	0	950	0	0	Renovations	0	0	950	0	950
260 366	Howard L Hall Elementa	686	0	575	0	0	575	8	11	Renovations	0	575	0	0	575
260 367	Bill Hefner Elementary	720	18	817	0	0	817	2	5	Renovations	18	817	0	0	817
260 368	Hope Mills Middle	552	0	0	680	0	680	0	0	Renovations	0	0	680	0	680
260 369	John R Griffin Middle	1,184	0	0	1,273	0	1,273	0	0	Renovations	0	0	1,273	0	1,273
260 370	Ed V Baldwin Elementar	677	36	638	0	0	638	3	6	Renovations	36	638	0	0	638
260 371	Ireland Drive Middle	305	0	0	326	0	326	2	3	Renovations	0	0	326	0	326
260 372	Lewis Chapel Middle	613	0	0	691	0	691	1	1	Renovations	0	0	691	0	691
260 373	Gallberry Farm Element	980	36	884	0	0	884	5	7	Renovations	54	1,023	0	0	1,023
260 374	Alger B. Wilkins High Sc	136	0	0	0	320	320	0	0	Renovations	0	0	0	320	320
260 375	Gray's Creek Elementar	441	18	432	0	0	432	0	3	Renovations	18	432	0	0	432
260 380	Long Hill Elementary	494	0	516	0	0	516	0	1	Renovations	0	516	0	0	516
260 382	Lucile Souders Element	412	36	400	0	0	400	1	1	Renovations	36	400	0	0	400
260 383	Mac Williams Middle	1,185	0	0	1,164	0	1,164	0	1	Renovations	0	0	1,164	0	1,164
260 386	Margaret Willis Element	314	18	294	0	0	294	2	3	Renovations	18	294	0	0	294
260 388	Massey Hill Classical Hi	222	0	0	0	538	538	1	1	Renovations	0	0	0	538	538
260 396	Mary McArthur Element	437	36	520	0	0	520	0	2	Renovations	36	520	0	0	520
260 397	E Melvin Honeycutt Ele	957	0	892	0	0	892	3	5	Renovations	0	892	0	0	892
260 398	E E Miller Elementary	542	36	703	0	0	703	0	1	Renovations	36	703	0	0	703
260 400	Montclair Elementary	434	18	465	0	0	465	1	4	Renovations	18	465	0	0	465
260 401	Morganton Road Eleme	539	0	601	0	0	601	0	2	Renovations	0	601	0	0	601
260 402	Manchester Elementary	370	0	386	0	0	386	2	3	Renovations	0	386	0	0	386
260 403	New Century Internation	674	54	736	0	0	736	0	0	Renovations	54	736	0	0	736
260 404	William H Owen Elemen	393	36	480	0	0	480	0	1	Renovations	36	480	0	0	480



2020-21 DPI Facility Needs Survey

Capacity Summary 6 to 10 Years

Cumberland County Schools

Capacity Summary & Plan (6 to 10 years)

	ADM 2019-20	Current Capacity				Mobile	Teach Station	Needs	Planned Capacity (future)						
		Pre-K	K-5	Middle	High				K-12	Pre-K	K-5	Middle	High	K-12	
															UNIT: 260
260 405	Walker-Spivey Element	253	18	310	0	0	310	2	3	Renovations	18	310	0	0	310
260 406	Pine Forest Middle	801	0	0	804	0	804	0	0	Renovations	0	0	804	0	804
260 407	Lake Rim Elementary	712	36	695	0	0	695	0	2	Renovations	36	695	0	0	695
260 408	Pine Forest High	1,488	0	0	1,712	0	1,712	0	3	Renovations	0	0	0	1,712	1,712
260 410	Ponderosa Elementary	380	36	356	0	0	356	3	3	Renovations	36	356	0	0	356
260 411	Reid Ross Classical Hig	240	0	0	0	610	610	0	0	Renovations	0	0	0	610	610
260 412	Raleigh Road Elementa	243	0	179	0	0	179	2	2	Renovations	0	179	0	0	179
260 413	Howard Learning Acade	83	0	0	166	0	166	0	2	Renovations	0	0	166	0	166
260 414	Benjamin J Martin Elem	558	36	485	0	0	485	3	7	Renovations	36	485	0	0	485
260 415	Rockfish Elementary	718	18	799	0	0	799	0	2	Renovations	18	799	0	0	799
260 416	J W Seabrook Elementa	271	18	267	0	0	267	1	2	Renovations	18	267	0	0	267
260 417	New Century Internation	419	0	0	602	0	602	0	0	Renovations	0	0	602	0	602
260 418	Seventy-First Classical	479	0	0	523	0	523	2	3	Renovations	0	0	523	0	523
260 419	Reid Ross Classical Mid	325	0	0	444	0	444	0	0	None Needed	0	0	444	0	444
260 424	Seventy-First High	1,309	0	0	0	2,062	2,062	1	3	Renovations	0	0	0	2,062	2,062
260 425	South View Middle	683	0	0	847	0	847	0	0	Renovations	0	0	847	0	847
260 426	Sherwood Park Element	308	18	433	0	0	433	1	4	Renovations	18	433	0	0	433
260 427	South View High	1,456	0	0	0	1,871	1,871	3	3	Renovations	0	0	0	1,871	1,871
260 428	Spring Lake Middle	475	0	0	664	0	664	0	0	Renovations	0	0	664	0	664
260 430	Stedman Elementary	316	0	358	0	0	358	0	0	Renovations	0	358	0	0	358
260 432	Stedman Primary	148	36	162	0	0	162	0	0	Renovations	72	505	0	0	505
260 434	Stoney Point Elementar	1,015	0	826	0	0	826	11	11	Renovations	18	965	0	0	965
260 440	Sunnyside Elementary	340	0	303	0	0	303	4	7	Renovations	0	303	0	0	303
260 444	Teresa C Berrien Eleme	210	0	294	0	0	294	0	0	Renovations	0	294	0	0	294
260 446	Terry Sanford High	1,140	0	0	0	1,468	1,468	0	0	Renovations	0	0	0	1,468	1,468
260 448	Vanstory Hills Elementa	547	0	585	0	0	585	1	1	Renovations	0	585	0	0	585
260 449	Ramsey Street High	98	0	0	0	369	369	0	4	Renovations	0	0	0	369	369
260 450	Warrenwood Elementar	350	54	408	0	0	408	2	3	Renovations	54	408	0	0	408



2020-21 DPI Facility Needs Survey

Capacity Summary 6 to 10 Years

Cumberland County Schools

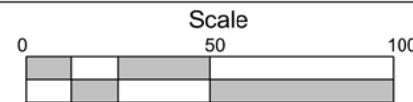
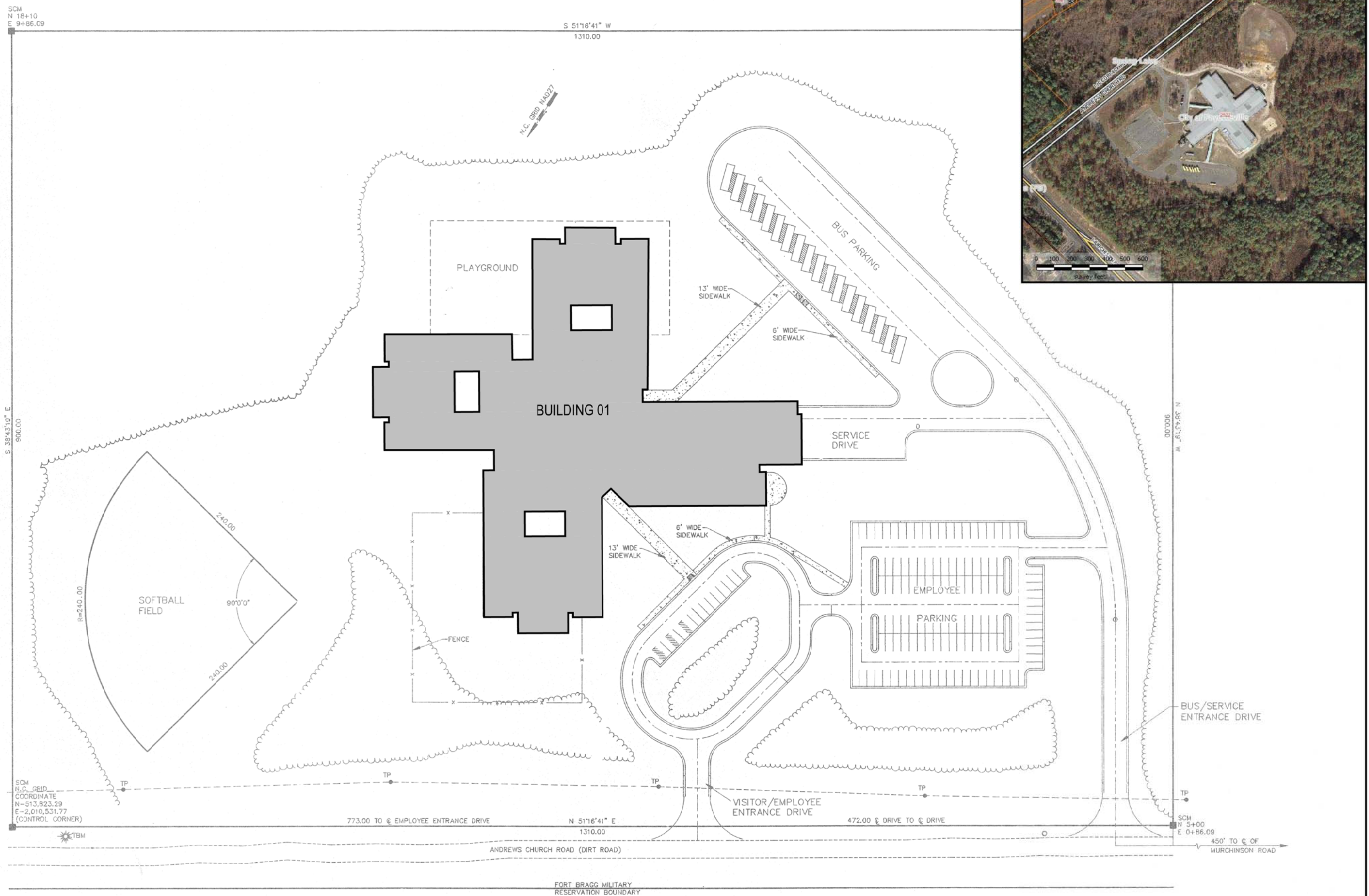
Capacity Summary & Plan (6 to 10 years)

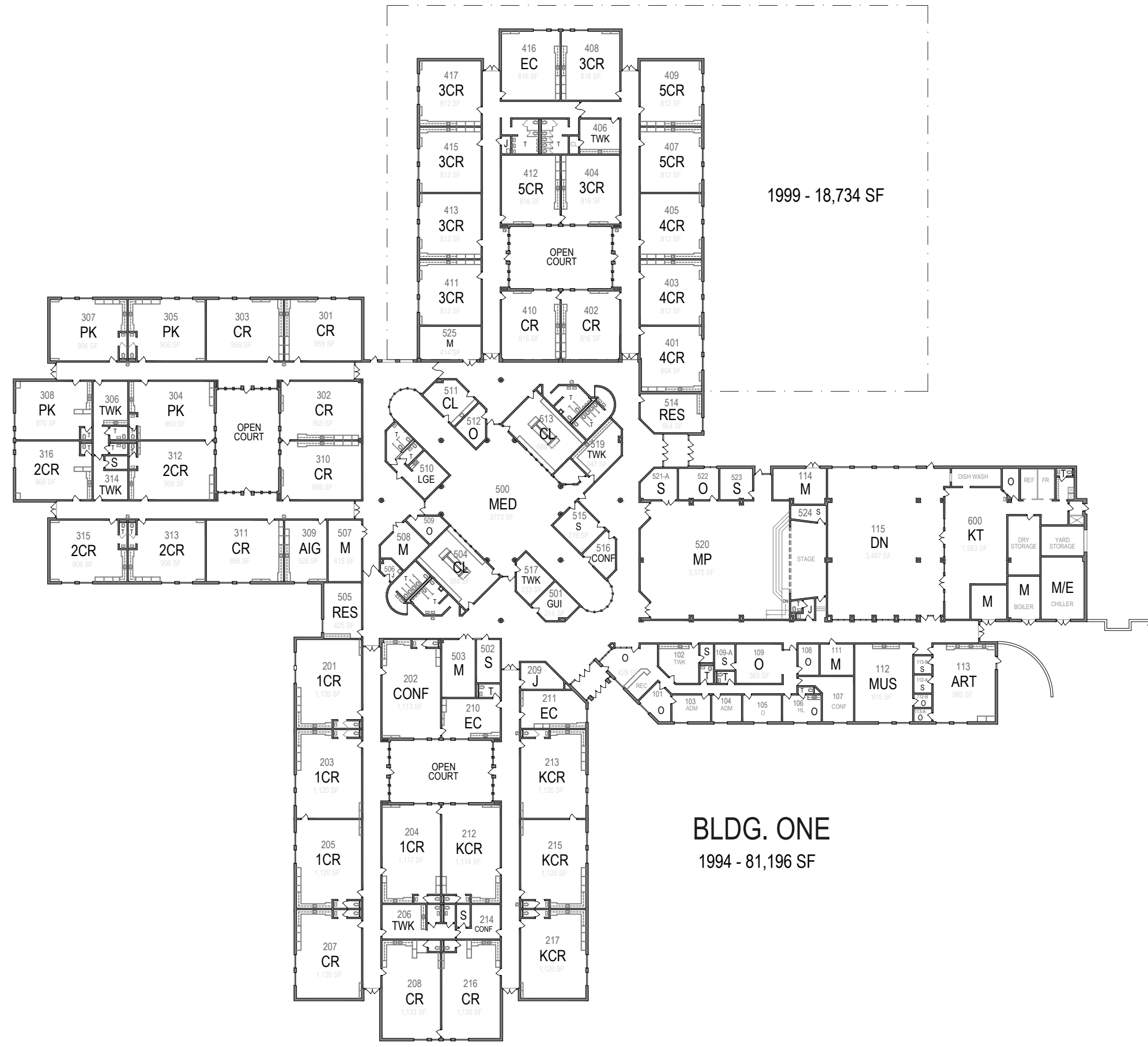
UNIT: 260	ADM 2019-20	Current Capacity				Teach Station	Needs	Planned Capacity (future)					
		Pre-K	K-5	Middle	High			K-5	Middle	High	K-12		
260 452 Westarea Elementary	523	18	614	0	0	0	Renovations	18	614	0	0	0	614
260 454 Westover Middle	786	0	0	819	0	0	Renovations	0	0	819	0	0	819
260 455 Westover High	1,008	0	0	0	1,352	3	Renovations	0	0	0	0	1,352	1,352
260 459 William T Brown Eleme	292	72	666	0	0	0	Renovations	72	666	0	0	0	666
260 700 Cumberland Polytechni	278	0	0	0	286	0	None Needed	0	0	0	0	286	286
Totals:	49,425	1,080	25,139	13,259	18,954	95		1,152	26,199	13,571	20,754	60,524	60,524

Current Capacity: K-5 Middle High K-12
 25,139 13,259 18,954 57,352
ADM 2019-20: 23,542 11,491 14,392 49,425
Difference: 1,597 1,768 4,562 7,927

Total Capacity: K-5 Middle High K-12
 26,199 13,571 20,754 60,524
Proj Enrollment 2029-30: 21,633 11,184 15,380 48,197
Difference: 4,566 2,387 5,374 12,327

W.T. Brown Elementary School





AREA SUMMARY			
BUILDING NO.	YEAR	AREA	TOTAL
ONE	1994	81,196 SF	99,930
	1999	18,734	
TOTAL		99,930 SF	

KEY			
ADM	ADMINISTRATIVE SUITE	T	TOILETS
GUI	GUIDANCE SUITE	O	OFFICE
PK	PRE-KINDER. CLASSROOM	J	JANITORIAL
KCR	KINDERGARTEN CLASSROOM	S	STORAGE
1CR	FIRST GRADE CLASSROOM	READ	READING LAB
2CR	SECOND GRADE CLASSROOM	M	MECHANICAL ROOM
3CR	THIRD GRADE CLASSROOM	E	ELECTRICAL ROOM
4CR	FOURTH GRADE CLASSROOM	LGE	TEACHER'S LOUNGE
5CR	FIFTH GRADE CLASSROOM	EC	EXCEPTIONAL CHILDREN
CL	COMPUTER LAB	AIG	ADVANCED/GIFTED
MED	MEDIA CENTER	MUS	MUSIC ROOM
KT	KITCHEN	ART	ART CLASSROOM
DN	DINING / CAFETERIA	RES	RESOURCE
SVR	SERVERY	TWK	TEACHER WORKROOM
CONF	CONFERENCE ROOM	HL	HEALTH ROOM

BLDG. ONE
1994 - 81,196 SF

ELEMENTARY SCHOOL USAGE WORKSHEET

School Code: 260-459	School Name: William T. Brown Elementary
-----------------------------	---

Bldg #:	1	(1994) Bldg Area SF:	81,196	Total SF:	99,930
		(1999) Bldg Area SF:	18,734		

Updated: 09/23/20

Room #	SF	Typ. SF	Meets Typ.	Usage	Notes
600	1,583	1,261	X	Kitchen	
115	3,487	1,800	X	Dining / Cafeteria	
520	3,572	3,600		Multipurpose	
109	365	187	X	Office	
112	910		X	Music Room	
113	980		X	Art Classroom	
O	428	187	X	Office	
501	214	300		Guidance Suite	
504	688	850		Keyboarding	
513	688	850		Keyboarding	<i>*Assigned Resource</i>
515	276	87	X	Storage	
517	233	300		Teacher Workroom	
519	347	300	X	Teacher Workroom	
MED	3,773	1,600	X	Media Center	
201	1,120	1,000	X	1st Grade Classroom	
202	1,113	200	X	Conference Room	<i>Assigned K Classroom</i>
203	1,120	1,000	X	1st Grade Classroom	
204	1,117	1,000	X	1st Grade Classroom	
205	1,120	1,000	X	1st Grade Classroom	
207	1,120	1,200		EC Classroom	<i>Assigned 1st Classroom</i>
208	1,133	1,200		EC Classroom	<i>Assigned 1st Classroom</i>
212	1,114	1,200		Kindergarten Classroom	
213	1,120	1,200		Kindergarten Classroom	
215	1,120	1,200		Kindergarten Classroom	
216	1,130	1,200		EC Classroom	
217	1,120	1,200		EC Classroom	<i>Assigned K Classroom</i>
505	425	450		Resource	
301	959	1,200		EC Classroom	
302	955	1,200		EC Classroom	
303	959	1,200		EC Classroom	
304	960	1,200		Pre-K Classroom	
305	906	1,200		Pre-K Classroom	
307	906	1,200		Pre-K Classroom	
308	870	1,200		Pre-K Classroom	

ELEMENTARY SCHOOL USAGE WORKSHEET

School Code: 260-459				School Name: William T. Brown Elementary	
309	526	450	X	Resource	AIG
310	956	1,000		2nd Grade Classroom	
311	959	1,000		2nd Grade Classroom	
312	956	1,000		2nd Grade Classroom	
313	906	1,000		2nd Grade Classroom	
315	906	1,000		2nd Grade Classroom	
316	866	1,000		2nd Grade Classroom	
514	864	450	X	Resource	<i>Assigned K Classroom</i>
401	804	850		4th Grade Classroom	
402	816	850		4th Grade Classroom	
403	812	850		4th Grade Classroom	
404	816	1,000		3rd Grade Classroom	
405	812	850		4th Grade Classroom	
407	812	850		5th Grade Classroom	
408	816	1,000		3rd Grade Classroom	
409	812	850		5th Grade Classroom	
410	816	850		5th Grade Classroom	
411	812	1,000		3rd Grade Classroom	
412	812	850		5th Grade Classroom	

ELEMENTARY SCHOOL USAGE WORKSHEET

School Code: 260-459				School Name: William T. Brown Elementary	
413	812	1,000		3rd Grade Classroom	
415	812	1,000		3rd Grade Classroom	
416	816	1,200		EC Classroom	
417	812	1,000		3rd Grade Classroom	

Total School SF: 99,930

Classroom Type		Current #	Typical #	Meets Typ.
Pre-K				
	Pre-K Classrooms	4	1	X
Academic				
	Kindergartens	3	3	X
	1st Grade	4	3	X
	2-3 Grade	12	6	X
	4-5 Grade	8	4	X
	EC Self-Contained	8	1	X
	Resource	3	3	X
	Computer Rooms	2	1	X
Arts Education				
	Visual Arts	1	1	X
	Dance / Drama	0	0	X
	General Music	1	0	X
Physical Education				
	PE / MP / Gym	1	1	X



William T Brown Elementary

School: **William T Brown Elementary** School No: **260-459**

Type: **Elementary** Grades: **0K-05** Current ADM **292**

Teaching Stations (mobiles/temp. bldgs. for educational use at this school)
in Mobile Units:

Add New School

Delete School

Undo Changes

Save and Close Form

	Pre - K	K - 5	6 - 8	9 - 12	Total K-12
Current Capacity	72	666			666

(Include the capacity of new schools and additions that are under construction or funded in the "Current Capacity")

0 - 5 Year Project Needed

Project Needed:

Priority: Immediate Needs

5 Years Planned Capacity

Pre - K	K - 5	6 - 8	9 - 12	Total K-12
72	666			666

(Capacity planned to accomodate projected enrollment 2025-26)

Justifications: (Why are these improvements needed?)

- Depreciation/ Deferred Maintenance
- Air Conditioning / Energy Conservation

Notes/ Description:

6 - 10 Year Project Needed

Project Needed:

Priority: 9-10 Year Needs

10 Years Planned Capacity

Pre - K	K - 5	6 - 8	9 - 12	Total K-12
72	666			666

(Capacity planned to accomodate projected enrollment 2030-31)

Justifications: (Why are these improvements needed?)

- Depreciation/ Deferred Maintenance
- Air Conditioning / Energy Conservation

Notes/ Description:



William T Brown Elementary

School No: 260459

Date: 9/1/2020

School Capacity

Form Instructions: Enter the number of classrooms and other spaces. Include additions and new schools that are under construction or in the design phase.

Pre-K	Quantity	Capacity
Pre-K Classrooms	4	72

Note: The capacity of Pre-K Classrooms is NOT included in the school capacity totals.

	Classrooms/Spaces			Capacity		
	Elem	Middle	High	Elem	Middle	High
Kindergartens	6			108		
Grade 1	6			96		
Grades 2-3	12			204		
Grades 4-5	8			208		
LA/SS/Math Classrooms						
Math / Science Classrooms						
Science Labs						
Science Classrooms						
Exception S/C		5		50		
Resource		3				
4+ Computers in each room?		<input checked="" type="checkbox"/> Yes?				
Computer Rooms		1				

Arts Education	Elem	Middle	High			
Visual Arts	1					
Dance / Drama						
General Music	1					
Instrumental Music (Band)						
Vocal Music (Chorus)						
Subtotal - Arts	2					

Scroll Down

Vocational	Elem	Middle	High			
Keyboarding Labs						
Prevocational Labs						
Business / Office Ed.						
Service / Marketing						
Technology Labs						
Agri / Trade + Ind						



William T Brown Elementary

School No: 260459

Date: 9/1/2020

Physical Education, etc.

	Elem	Middle	High		
P.E. / Multi / Gymnasium	<input checked="" type="checkbox"/>	<input type="checkbox"/>	<input type="checkbox"/>		
Gym Seating					
Auxilliary Gym		<input type="checkbox"/>	<input type="checkbox"/>		
Health / P.E.					
Weight Room					
Wrestling					
ROTC					

Capacity Totals (sum from the capacity above):	666	0	0
Capacity Totals (sum from Capacity Plan form):	666	0	0



William T Brown Elementary

School No: 260459

Date: 9/1/2020

Core Capacity

Media Center	Facilities	Capacity
Media RLV Area:	3,773	sq.ft. / 4 = 943
Media Support Area:	<input type="radio"/> Sm <input type="radio"/> OK <input checked="" type="radio"/> Good	

Dining and Kitchen	Facilities	Capacity
Dining Area	3,487	sq.ft. / 4 = 872
Kitchen Area:	<input type="radio"/> Small <input type="radio"/> OK <input checked="" type="radio"/> Good	
# of Serving Lines:	2	
Minimum Core Capacity:		872

Auditorium	Facilities	
Auditorium:	<input type="checkbox"/> Yes?	
# of Seats:		
Admin/Guidance Area:	<input type="radio"/> Small <input type="radio"/> OK <input checked="" type="radio"/> Good	



William T Brown Elementary

School No: 260459

Date: 9/1/2020

General Building Information

Form Instructions: Enter building construction history for this school. For example, original building, classroom addition, mini-gym addition, etc. Also complete the requested information concerning the particular construction..

Building Construction History

For definition Press Condition or Accessibility

Building	Year Built	SF Area	Condition	Accessibility
One - Main Building	1994	81196	Very Good	In Compliance
One - Classroom Addition	1999	18734	Very Good	In Compliance

School Total Area	SF	99930
School Site Acreage	Acreage	27

Enter the total square feet area of school.

Enter the total site acreage of school.

Utility Costs

Complete the following utility cost for FY 2019-20. If there are solar arrays on the site or school roof, complete Solar Energy section.

UTILITY COST (\$)			VALUE OF SOLAR ENERGY (\$)	
ELEC	GAS	WATER / SEWER	USED	SOLD TO UTILITY
67264	5382	22045	0	0
UTILITY CONSUPTION			SOLAR ENERGY CONSUMPTION	
ELEC (MW)	GAS (THERM)	WATER (GAL)	USED (MW)	SOLD TO UTILITY (MW)
681	5624	1340523		

Scroll Down

Mobile Units

Note: The capacity of mobile classroom units is NOT included in the school capacity totals.

Mobile Units Type	No	Teaching Stations	no.	Capacity
Single Wide		Total Teaching Stations		
Double Wide		Total Teaching Stations		
Mega-module		Total Teaching Stations		
Total from Above		Total from Above		
		Total from Capacity and Needs Plan		



2020-21 DPI Facility Needs Survey Schools Questionnaire

School No: **260-459** School: **William T Brown Elementary**
 Type: **Elementary** Grades: **0K-05** Current ADM **292**

General Information Survey (this school)

<input type="text" value="traditional school"/>	1. Operational calendar.
<input type="text"/>	2. For high schools, provide current scheduling format.
<input type="text" value="None"/>	3. Does this school have a special programmatic focus: Magnet / CTE / IB / Early College, etc.?
<input type="text" value="Yes"/>	4. Are all science labs at this school in compliance with NCDPI's Science Safety Checklist? https://files.nc.gov/dpi/documents/schoolplanning/science-safety-checklist.pdf
<input type="text" value="Yes"/>	5. Does the main entrance at this school include a Security Vestibule to control visitor entry?
<input type="text" value="Yes"/>	6. Is the main office at this school equipped with the required Silent Panic Alarm to directly call emergency first responders?
<input type="text" value="Staff"/>	7. Staff or private janitorial services?
<input type="text" value="No"/>	8. LEED certification? (any buildings)
<input type="text" value="0"/>	9. Number of mobile units on this campus - in use?
<input type="text" value="0"/>	10. Number of mobile units on this campus - out of use?
<input type="text" value="0"/>	11. Number of SROs?
<input type="text" value="0"/>	12. Number of School Nurses?
<input type="text" value="1"/>	13. Number of Assistant Principals?
<input type="text" value="1"/>	14. Number of School Counselors?
<input type="text" value="289363"/>	15. Total expenditures for Capital Projects last 5 years? (this campus)



2020-21 DPI Facility Needs Survey Schools Questionnaire

School No: **260-459** School: **William T Brown Elementary**

Type: **Elementary** Grades: **0K-05** Current ADM **292**

Special Programs / Facilities Survey (this campus)

- 16. Pre-K? (not child care)
- 17. CTE programs?
-
- 18. Auto body/paint shop?
- 19. Auto repair shop?
- 20. JROTC program?
- 21. Shooting range?
- 22. Greenhouse?
- 23. Swimming pool?
- 24. Fire training facility?
- 25. List any other specialty programs and/or facilities.

Shared Campus Usage Survey (this campus)

- 26. Alternative school?
- 27. Childcare Facility? (not Pre-K)
- 28. Lunch prepared on this site for transport to other schools?
- 29. Community College use?
- 30. Parks and Recreation use?
- 31. Public Library use?
- 32. Community Health Clinic?
- 33. Designation as a storm shelter / emergency shelter?
- 34. Site serves as a regional bus facility?
- 35. List any other critical / shared facility services operating under an MOU?



2020-21 DPI Facility Needs Survey Schools Questionnaire

School No: **260-459** School: **William T Brown Elementary**

Type: **Elementary** Grades: **0K-05** Current ADM **292**

Campus Infrastructure Survey (this campus)

- 36. Oldest building on campus - year built?
- 37. Newest building on campus - year built?
- 38. Year of most recent renovation?
- 39. Are there retaining walls on site?
- 40. Water service provider?
- 41. Sewer service provider?
- 42. Emergency generator use?
- 43. Fossil fuel type used on this campus?
- 44. Underground fuel storage tanks remaining?
- 45. Is campus totally abated / known to be free of asbestos, lead, etc.?
- 46. Any all-wood constructed educational buildings on campus?
- 47. Use of any PV / solar arrays?
- 48. Bus lot with parking for local route only?
- 49. Technology / Broadband service type?
- 50. Percentage of students with reliable home internet connection?
- 51. Status of named storm damage repairs, if any?
- 52. Has campus ever been closed long term due to damage from a catastrophic event such as fire, tornado, hurricane, flooding?



William T Brown Elementary

School Number: **260-459**

Planned Capacity: **666**

Priority: **1**

Pre-K Capacity: **72**

Additions		Date: 10/1 /2020			Estimated Cost	
Academic Classrooms		Elem	Middle	High	Area (sf)	
Pre-K Clrms:						
Kindergartens:						
Grades 1 Clrms:						
Grades 2-3 Clrms:						
Grades 4-5* Clrms:						
LA/SS/Math Clrms:						
Math/Sci Clrms:						
Science Labs:						
Science Classrooms:						
Exceptional (self-contained):						
Resource:						
Computer Rooms:						
Arts Education		Elem	Middle	High		
Visual Arts:						
General Music:						
Instrumental Music (band):						
Vocal Music (chorus):						
Dance/Drama:						
Vocational		Elem	Middle	High		
Keyboarding Labs:						
Prevocational Labs:						
Business/Office Ed:						
Service/Marketing:						
Technology Labs:						
Agri/Trade+Ind:						
Physical Education,etc		Elem	Middle	High		
P.E./ Multi/ Main Gymnasium:	<input type="checkbox"/>	<input type="checkbox"/>	<input type="checkbox"/>	<input type="checkbox"/>		Check to add new facility
Auxiliary Gym:	<input type="checkbox"/>	<input type="checkbox"/>	<input type="checkbox"/>	<input type="checkbox"/>		Check to add new facility
Health/P.E. Clrms:						
Weight Room:						
Wrestling:						
Core Facilities						
Media RLV Area:	<input type="checkbox"/>	<input type="checkbox"/>	<input type="checkbox"/>	<input type="checkbox"/>		
Media Support Area:						
Dining Area:		<input type="checkbox"/>				
Kitchen Area:						
# of Serving Lines:						
Auditorium:			<input type="checkbox"/>			
Admin/Guidance Area:						
Other/misc. Area:						
Subtotals:						
Bldg. Support/Circulation:						
Total Area (s.f.) Added:						Const. Cost:
Demolition of Existing Buildings:					s.f.	
Contingency:						
Admin. and Design Fees:						
*Base-line Cost/ sq.ft.: \$250					Total for Additions:	

Land Purchase

Additional Land Needed: Acres x \$ /Acre =



William T Brown Elementary

School Number: **260-459**

Planned Capacity: **666**

Priority: **1**

Pre-K Capacity: **72**

Renovations

Site Improvements	Size/ Amount	Notes/ Description	Cost
Parking/ Drives:\$	304,260	Resurface all lots & drives	304,260
Sewer System:	<input type="checkbox"/>	Check box to add sewer system.	
Water System (well):	<input type="checkbox"/>	Check box to add a well.	
Grading/ Drainage:\$			
Canopy (cov. walk):		s.f.	
Other Sitework (describe):\$			
Building/ Exterior/ Structure			
Roof Replacement:	53,000	s.f. X \$5.78 per sq. ft. =	306,540
Structural Repairs:\$			
Window Replacement:		s.f.	
Masonry/ Ext. Wall Repairs:\$			
Other Bldg/Exterior (describe):\$			
Interior/ Finishes			
Partition/Wall Construction:\$			
Ceilings:		s.f.	
Flooring:	39,000	s.f. X \$3.25 per sq. ft. =	126,750
Painting:	99,930	s.f. X \$1.80 per sq. ft. =	179,874
Other Bldg/Interior (describe):\$			
Plumbing/ HVAC/ Electrical			
Air Conditioning:		s.f.	935,125
Electrical Service:		s.f.	814,450
Lighting:	99,930	s.f. X \$8.00 per sq. ft. =	799,440
Computer/ Tech. Wiring:		s.f.	
Plumbing:\$	23,000	Backflow, Water Heaters, Storage	23,000
Other Plbg/HVAC/Elec.(describe):\$	223,200	Boiler/Update Building Automation & Software	223,200
Bldg. Code/ Life Safety			
Bldg. Code/ Life Safety:\$			
ADA Ramps/H.C. Access:\$			
ADA Toilet Renovations:\$			
Fire Alarm:\$	174,878	Replace Fire Alarm System	174,878
Sprinkler System:		s.f.	
Other Code/Safety (describe):\$	10,000	Security enhancement to core facilities	10,000
Hazardous Mat'l/ Environmental			
Hazardous Matl. Abatement:\$			
Indoor Air Quality:\$			
Inground Fuel Tanks:\$			
Radon Management:\$			
Other Environmental (describe):\$			
Other Renovations (not incl. above)			
Other Renovations (describe)1.\$	361,120	Resurface & Replace Playgrounds	361,120
2.\$			
3.\$			
Subtotal:			4,258,637
Contingency (5.5% of renovation cost):			425,864
Admin. and Design Fees (8.5% of renovation cost):			361,984
Total Renovation Cost:			\$5,046,485



William T Brown Elementary

School Number: 260-459

Planned Capacity: 666

Priority: 1

Pre-K Capacity: 72

Furnishings/ Equipment

Furn./ Eqpt. for Addition*:			
Kitchen Equipment:	<input type="checkbox"/>	Check to add kitchen equipment	
Media Center Furnishings*:	<input type="checkbox"/>	Check to add media center furnishings	
Other Furn./ Eqpt. (describe):	47,300	Walk-in Cooler/Freezer	47,300
Total Furn./ Eqpt.			\$47,300

Total Cost of Additions and Renovations: \$5,093,785

Notes/Comments:

[Empty text box for notes and comments]

Justifications Why are these improvements needed?

1. Depreciation/ Deferred Maintenance
2. Air Conditioning / Energy Conservation

Funding

Likelihood that County will fund project: Very Unlikely

If "Very Unlikely," why will County funding not be available? Current available funding is limited and not sufficient to fund all the identified needs.

What other funding sources are available for the project? None

NEWS RELEASE: Cumberland County Schools to Gather Community Input Regarding Proposed Preliminary Student Reassignment Target Areas

District leaders have developed preliminary student reassignment options as the Cumberland County Board of Education moves forward with the process of considering the closing of T.C. Berrien Elementary School. In developing options, which would impact schools in the T.C. Berrien area and potentially other schools in the district, multiple factors were considered, such as campus proximity, facility utilization and diversity.

District leaders shared the proposed preliminary student reassignment target areas with members of the Cumberland County Board of Education during the Jan. 4 Auxiliary Services Committee meeting and will gather input from families and community stakeholders prior to seeking Board approval.

The district has scheduled the following public forum sessions this month to gather input from the public.

- **Public Forum 1 - Ireland Drive and Douglas Byrd Middle School Families:** [Monday, Jan. 24, 6 p.m. at Douglas Byrd Middle School, 1616 Ireland Dr, Fayetteville, NC 28304](#)
- **Public Forum 2 - Lillian Black, W.T. Brown and Manchester Elementary School Families:** [Tuesday, Jan. 25, 6 p.m. at W. T. Brown Elementary School, 2522 Andrews Church Rd, Spring Lake, NC 28390](#)
- **Public Forum 3 - T.C. Berrien, Lucile Souders, Ferguson-Easley, Glendale Acres, Ashley, Alma Easom, Vanstory Hills, Walker-Spivey, Luther "Nick" Jeralds and R. Max Abbott Families:** [Thursday, Jan. 27, 6 p.m. at Ferguson-Easley Elementary School, 1857 Seabrook Rd, Fayetteville, NC 28301](#)

Those who attend the forums will be required to follow the 3Ws of COVID-19 protocol—**W**ait 6 feet. **W**ash your hands. **W**ear a mask.

For additional information and to share feedback prior to the upcoming forums, the public is invited to visit the CCS Student Reassignment website at www.ccs.k12.nc.us/reassignment.

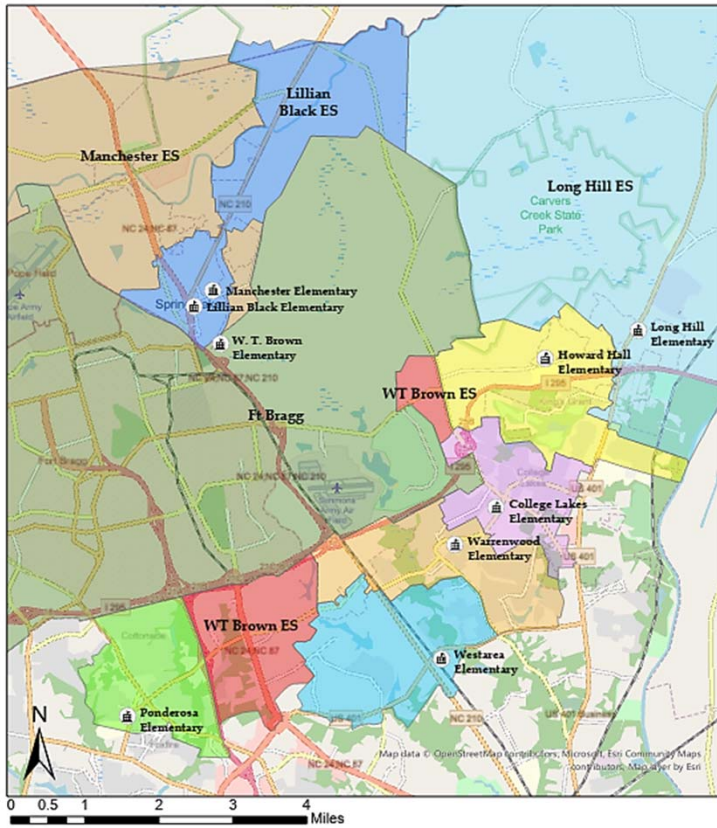


Proposed Reassignment Plan

Lillian Black Elementary School, 2022-23

*Our Commitment: Every Student
Collaborative ★ Competitive ★ Successful*

Lillian Black and Surrounding Districts



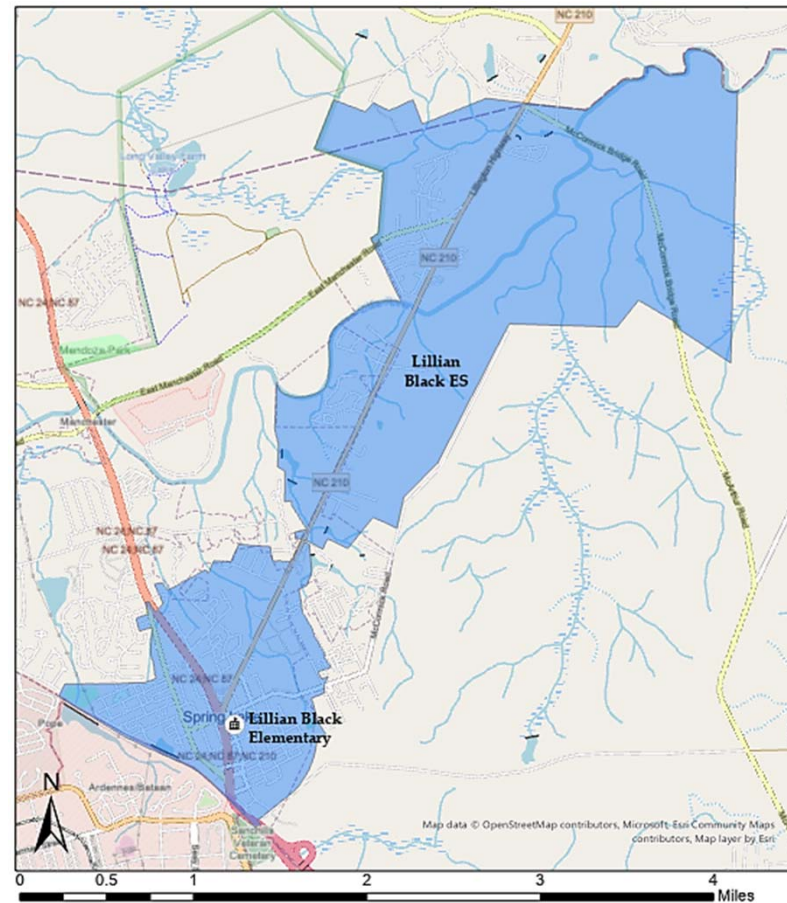
This is a map of Lillian Black and its surrounding student assignment areas. The closest are...

- ★ Fort Bragg
- ★ Manchester ES
- ★ Long Hill ES
- ★ Ponderosa ES
- ★ W. T. Brown ES
- ★ Westarea ES
- ★ Warrenwood ES
- ★ College Lakes ES
- ★ Howard Hall ES

Lillian Black ES

- ★ Currently there are 175 students that live in the student assignment area and attend Lillian Black Elementary School in grades K-5.

Grade Level	Current Enrollment
K	43
1	29
2	29
3	28
4	21
5	25
Total	175



Legend
LillianBlack ES
School

Proposed Plans for Reassignment of Lillian Black

- ★ **Plan A:** All of Lillian Black ES is reassigned to W. T. Brown ES.
 - Attempted goal (proximity and utilization)

- ★ **Plan B:** All of Lillian Black ES and the southern most portion of Manchester ES are reassigned to W. T. Brown ES.
 - Attempted goal (proximity and utilization)

- ★ **Plan C:** All of Lillian Black ES district, the southern most portion of Manchester ES, and T. C. Berrien ES are reassigned to W. T. Brown ES.
 - Attempted goal (utilization and diversity)

Plan A:

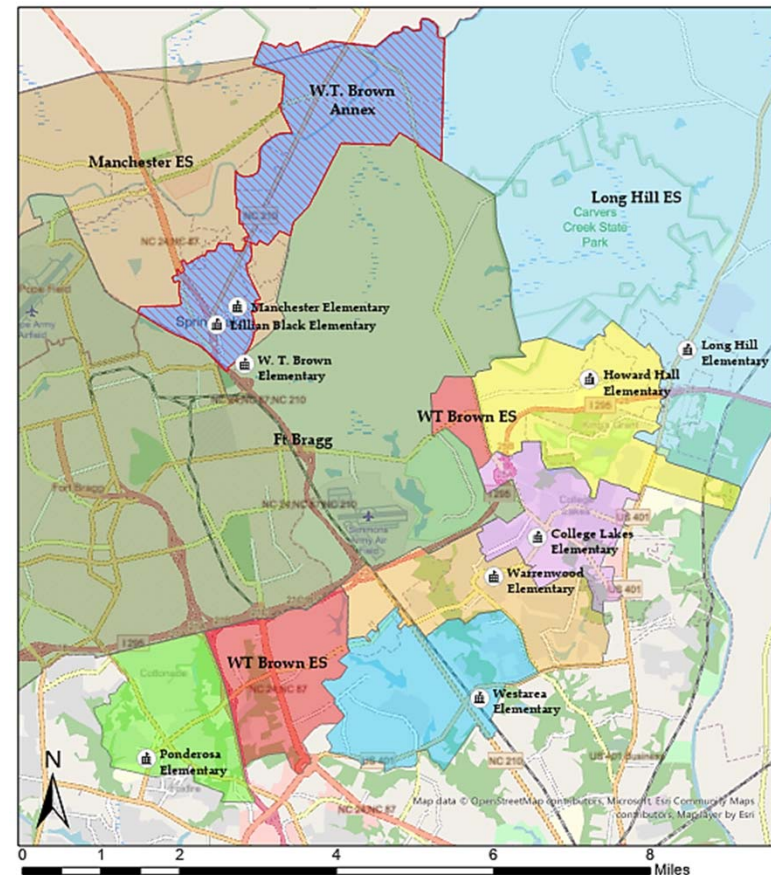
Proposed Annex to W.T. Brown ES

- ★ All of Lillian Black ES, which has 175 students, will be reassigned to W. T. Brown ES.
- ★ W. T. Brown ES currently has 207 students in grades K-5, with a building capacity for 665* students. This plan would add 175 students to W. T. Brown ES from Lillian Black ES.

Grade Level	Current Enrollment		Students from Lillian Black		Grade Level	Proposed Enrollment
K	50	➔	43	➔	K	93
1	31		29		1	60
2	33		29		2	62
3	32	➔	28	➔	3	60
4	31		21		4	52
5	30	➔	25	➔	5	55
Total	207		175		Total	382

Building Capacity	New Proposed Enrollment
665*	382

*Reduced for Pre-K classrooms



Demographics of the W. T. Brown Annex

School	Indian	Asian	Black	Pacific	White	Hispanic	Two or More
Lillian Black	1%		54%		16%	20%	9%
W. T. Brown	1%		72%		5%	15%	7%



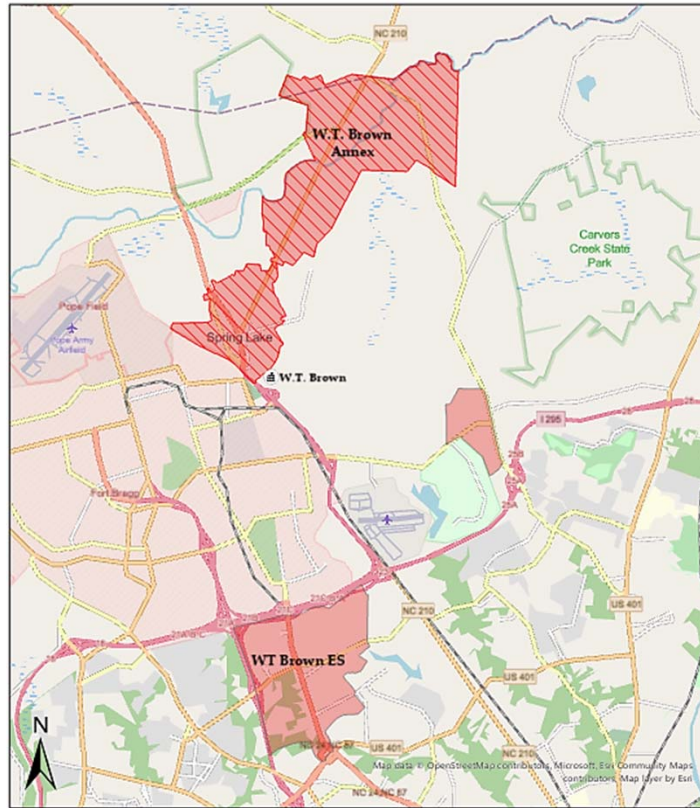
Student Assignment Area	Economic Index
Lillian Black ES	3.0
W. T. Brown ES	3.0



School	Indian	Asian	Black	Pacific	White	Hispanic	Two or More
W. T. Brown	1%		64% ↓		10% ↑	17% ↑	8% ↑




Student Assignment Area	Economic Index
W. T. Brown ES	3.0

W. T. Brown Annex Full-Scope



0 1 2 4 6 8 Miles

Legend

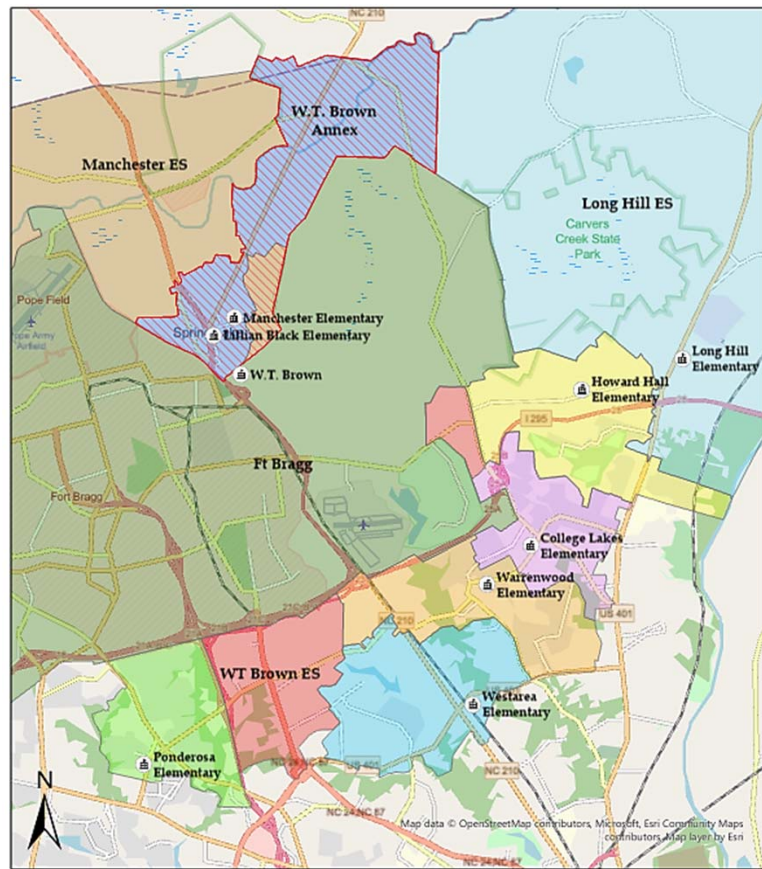
-  WT Brown Annex
-  WT Brown ES
-  Elementary_Schools

Considerations of the W. T. Brown Annex

- ★ Movement of 175 students.
- ★ Closing Lillian Black Elementary.
- ★ Better utilization of facility at W. T. Brown Elementary.
- ★ W. T. Brown facility provides more educational opportunities.
- ★ Furthest distance that students have to travel is 7.2 miles.
- ★ No change in feeder school alignment.
- ★ No significant change expected in bus routes.

Plan B:

Proposed Annex to W. T. Brown ES



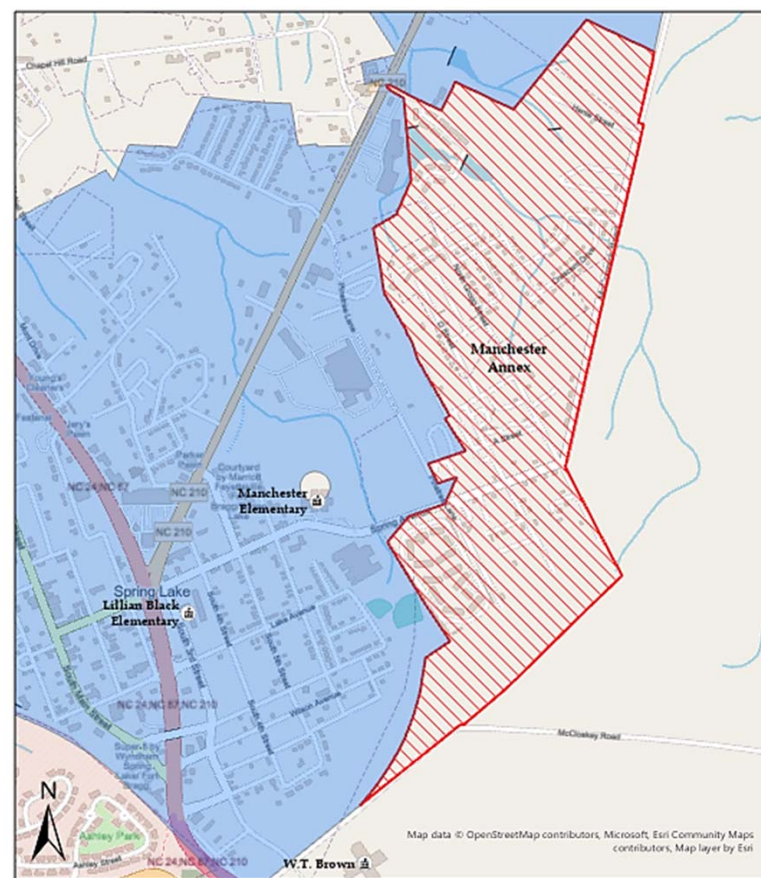
0 1 2 4 6 8 Miles

Legend		
Manchester ES	Ponderosa ES	College Lakes ES
LillianBlack ES	WT Brown ES	Howard Hall ES
Fort Bragg	Westarea ES	WT Brown Annex
Long Hill ES	Warrenwood ES	Elementary_Schools

- ★ All of Lillian Black ES containing 175 students will be reassigned to W. T. Brown ES.
- ★ The southern most part of Manchester ES containing 78 students will also be reassigned to W. T. Brown ES.
- ★ W. T. Brown ES currently has 207 students in grades K-5, with a building capacity for 665 students.
- ★ Manchester ES currently has 359 students in grades K-5, with a building capacity for 386 students. This plan would reduce that number to 281 students.

Manchester Annex to W.T. Brown ES

- ★ A geographic area southeast of Lillington Highway (NC 210). This area includes McCormick Road, Grogg Street, Pine Tree Lane, Wilson Avenue Extension, Betty Street, Hinkle Street and Waterway Drive. Developments include Stone Gate Apartments, Lakehurst Apartments, Southern Gardens, Lakeview Gardens, and Heritage MHP.



0 0.15 0.3 0.6 0.9 1.2 Miles

- Legend
- Manchester Annex
 - LillianBlack ES
 - Elementary_Schools



Statistics of the W. T. Brown Annex

Grade Level	Current Enrollment		Students from Lillian Black		Students from Manchester		Grade Level	Proposed Enrollment
K	50	⇒	43	⇒	14	⇒	K	107
1	31		29		16		1	76
2	33	⇒	29	⇒	12	⇒	2	74
3	32		28		11		3	71
4	31	⇒	21	⇒	9	⇒	4	61
5	30		25		16		5	71
Total	207		175		78		Total	460

School	Building Capacity	New Proposed Enrollment	Previous Enrollment
Lillian Black	274	0	175
Manchester	386	281	359
W.T. Brown	665*	460	207

*Reduced for Pre-K classrooms

Demographics of the W. T. Brown Annex

School	Indian	Asian	Black	Pacific	White	Hispanic	Two or More
Lillian Black	1%		54%		16%	20%	9%
Manchester	1%	1%	56%	1%	12%	19%	10%
W. T. Brown	1%		72%		5%	15%	7%

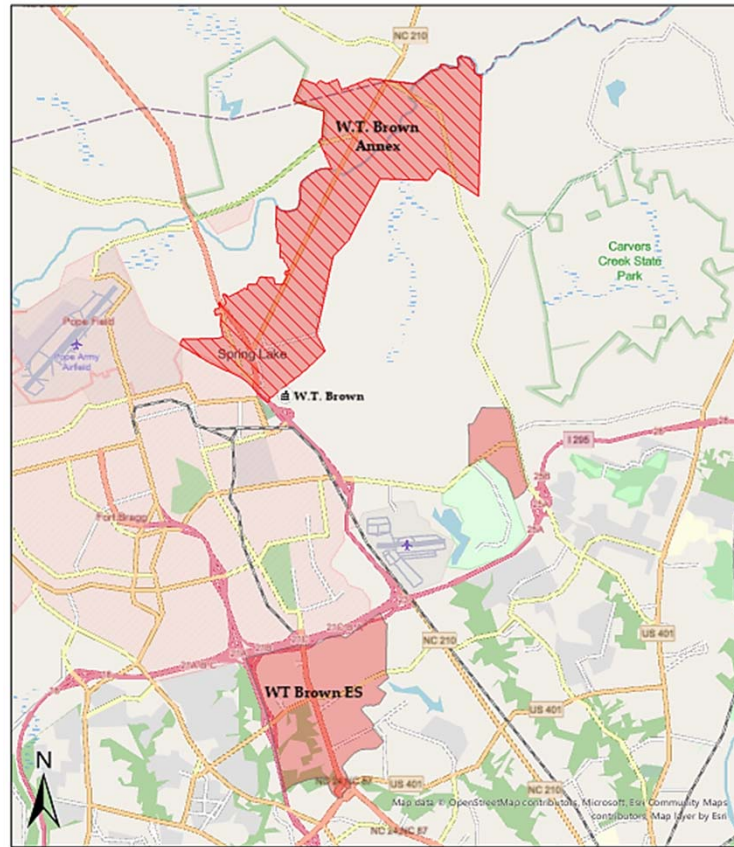
Student Assignment Area	Economic Index
Lillian Black ES	3.0
Manchester	4.3
W. T. Brown ES	3.0



School	Indian	Asian	Black	Pacific	White	Hispanic	Two or More
Manchester	1%	1%	57%	1%	12%	19%	9%
W. T. Brown	1%		62%		10%	18%	9%

Student Assignment Area	Economic Index
Manchester	4.4
W. T. Brown ES	3.0

W. T. Brown Annex Full-Scope



0 1 2 4 6 8 Miles

- Legend**
- WT Brown Annex
 - WT Brown ES
 - Elementary_Schools

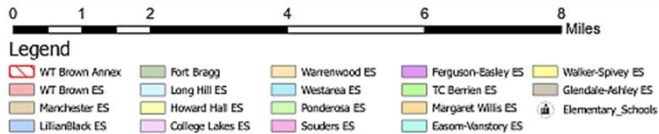
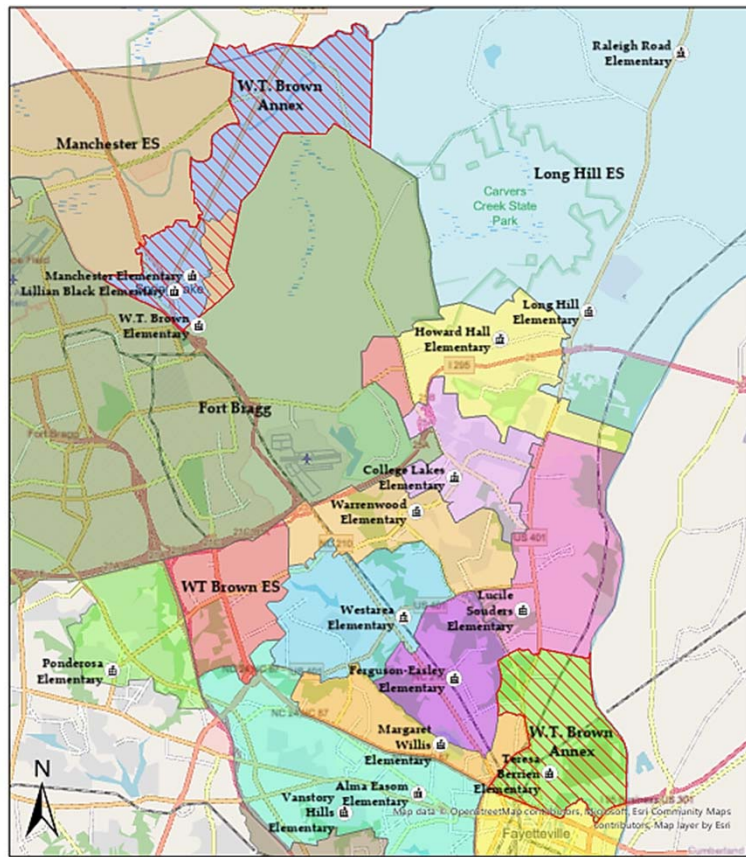


Considerations of the W. T. Brown Annex

- ★ Movement of 253 students.
- ★ Closing Lillian Black Elementary.
- ★ Better utilization of facility at W. T. Brown Elementary.
- ★ W. T. Brown facility provides more educational opportunities
- ★ Furthest distance that students have to travel is 7.2 miles.
- ★ No change in feeder school alignment.
- ★ No significant change expected in bus routes.

Plan C:

Proposed Annex to W. T. Brown ES



- ★ All of Lillian Black ES containing 175 students will be reassigned to W. T. Brown ES.
- ★ The southern most part of Manchester ES containing 78 students will also be reassigned to W. T. Brown ES.
- ★ W. T. Brown ES currently has 207 students in grades K-5, with a building capacity for 665 students.
- ★ Manchester ES currently has 359 students in grades K-5, with a building capacity for 386 students. This plan would reduce that number to 281 students.
- ★ T.C. Berrien ES is currently has 178 students and is being housed at W. T. Brown ES. This plan would assign the T.C. Berrien ES attendance area to W. T. Brown ES.

Statistics of the W. T. Brown Annex

Grade Level	Current Enrollment	Students from Lillian Black	Students from Manchester	Students from T. C. Berrien	Grade Level	Proposed Enrollment
K	50	43	14	32	K	139
1	31	29	16	36	1	112
2	33	29	12	27	2	101
3	32	28	11	29	3	100
4	31	21	9	26	4	87
5	30	25	16	28	5	99
Total	207	175	78	178	Total	638

School	Building Capacity	New Proposed Enrollment	Previous Enrollment
Manchester	386	281	359
W.T. Brown	665*	638	207

*Reduced for Pre-K classrooms

Demographics of the W. T. Brown Annex

School	Indian	Asian	Black	Pacific	White	Hispanic	Two or More
Lillian Black	1%		54%		16%	20%	9%
Manchester	1%	1%	56%	1%	12%	19%	10%
T. C. Berrien	2%		80%		5%	8%	5%
W. T. Brown	1%		72%		5%	15%	7%

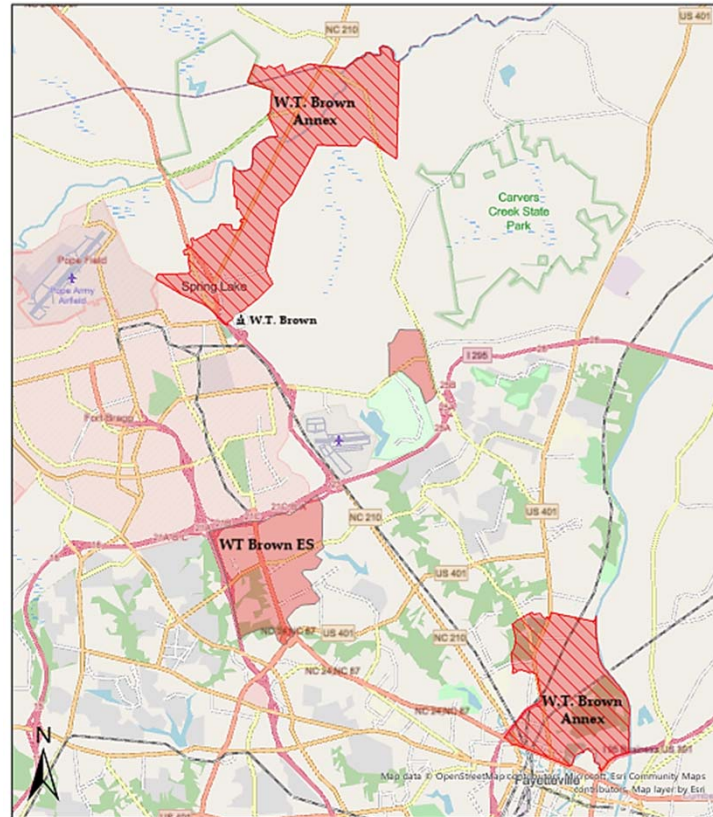
Student Assignment Area	Economic Index
Lillian Black ES	3.0
Manchester	4.3
T. C. Berrien	1.7
W. T. Brown ES	3.0



School	Indian	Asian	Black	Pacific	White	Hispanic	Two or More
Manchester	1%	1%	57% ↑	1%	12%	19%	9% ↓
W. T. Brown	1%		67% ↓		9% ↑	15% ↑	8% ↑

Student Assignment Area	Economic Index
Manchester	4.4 ↑
W. T. Brown ES	2.5 ↓

W. T. Brown Annex Full-Scope



0 1 2 4 6 8 Miles

Legend

- WT Brown Annex
- WT Brown ES
- Elementary_Schools

Considerations of the W. T. Brown Annex

- ★ Movement of 431 students.
- ★ Closing Lillian Black Elementary.
- ★ Better utilization of facility at W. T. Brown Elementary.
- ★ Increase in transportation cost.
- ★ No change to current feeder schools.
- ★ Current T. C. Berrien students would have to travel up to 9.9 miles

Questions?



Share Your Feedback



<https://bit.ly/ccsreassignment>

For Additional Information & Updates:

www.ccs.k12.nc.us/reassignment





STUDENT REASSIGNMENT FEEDBACK

126 responses* received as of 5 p.m. on Friday, February 18, 2022

*Responses listed as submitted by stakeholders.

New responses are highlighted in green.

Comments on Regarding Proposed Preliminary Reassignment Target Areas Impacting the Following Schools: Lillian Black, W.T. Brown and Manchester

PLAN A:

- What will happen to our jobs?
- Will CCS guarantee that we have jobs within the county?
- Will our jobs be lateral or will we be placed in a “fitting” profession (ex. a Teacher can go back as a TA or Admin can go back as a teacher)?
- Do we all need to put our names on the transfer list?
- What will the average class size be?
- Will the 5th graders at W.T. Brown that transferred from Lillian Black continue to Pine Forest Middle just as the 5th Graders from W.T. Brown?



- Most individuals in Spring Lake do not have personal transportation and there is not public transportation available in Spring Lake. What choices for schools will parents in this community truly have?
- How long will the bus routes be (in minutes, how early will students have to wake up for the bus, etc)?
- What is the timeline for this school closing? Will it happen this year?
- Will the community have a say in this matter or is this official?
- No, I do not wish for you to close this school
- No, my daughter loves her school at Manchester
- Lillian black Elementary To Manchester Elementary
- I agree except. Manchester Elementary has always been left out of plans. Manchester Elementary was built in 1967. I do not understand why Spring Lake students cannot all attend W.T. Brown. Why leave one group of students out of the reassignment. W.T. Brown is large enough to absorb both elementary schools. There are schools in CCS that have 800+ students. Lillian Black Currently has 175 students and Manchester has around 359 students. W.T. Brown is capable of merging both schools so all of our students can experience a high quality education in a modern, updated school building.

Since my arrival at Manchester Elementary School 6 yrs. ago, I have personally witnessed how neglected, uncared for Manchester is. We are constantly put on the back burner for improvements, repairs and a face-lift. The school is constantly being patched up. Let's go deeper so I can shine some light on the inequities that our students face:

1. The 1 main playground that our school has, is broken and in poor condition. It is roped off with yellow caution tape. This leaves our students to run and play in a barren field. Where is a playground for our students?
2. Let's talk about the sandboxes. Most schools have upgraded to the mulch. Nope, Manchester continues to have sand... years and years later. The sandbox is highly unsanitary; you can imagine how many animals have used this.



3. Our teachers, admin and custodians have advocated for our school to get painted for years to no avail. We are constantly put on the waitlist and told that we the entire county is behind on getting painted. In many of the bathrooms, the paint is peeling off the wall and custodians have had to scrape off the peeling paint. Our bathrooms are hideous.

4. Teachers have exactly one bathroom to use aside from student restrooms. The other restroom for adult use is also a janitor closet.

5. We also had mold and moisture issues in a section of the school building. Several staff members in that building often complained of migraines, coughing, sneezing, and breathing issues that were only present when at school. We constantly felt "foggy brained".

6. Heating and Air. We cannot control the heating in our rooms. Often times the heat is set on high and in order to be comfortable in the classroom we have to open doors and windows to combat the extreme heat. On the flip side, we still have air condition units that are in the windows. These units are loud and quite disruptive to the learning environment. Sometimes they make loud screeching sounds and we have to turn them off... which then the students will begin complaining about the temperature in the classroom.

7. Custodial issues: ever since my arrival at Manchester we have always been short on custodial staff. We are currently down to 2 custodians and one is out sick. That leaves one custodian for the entire staff. Who is deep cleaning? Who is going in to provide Covid cleaning protocols for all the classrooms where teachers and students have tested positive. Myself included.

If I'm completely honest. Manchester is located in a community that the county only shows attention to when the test scores drop consistently for years. No one pours into our school to give it a facelift, no one makes over a school track, it is just red dirt with potholes in it.

I am not understanding why Manchester is being left open in this reassignment. WT Brown is in walking distance for many of our students and families, but yet you are only going to take a portion of our students, who notably are in a higher income area... and leave Manchester open. So you are going to strip away resources and money when we are probably one of the poorest schools in the county.

How is this fair and equitable? The honest truth is that WT Brown at this point needs to become a Spring Lake School. Then all resources can be poured into one school, all teachers can then receive the help and support so ALL of Spring Lake children have an equitable and fair quality education.



From the outside looking in, can you imagine cutting district lines and telling one group of students you can go to a better school, and because you are on the opposite side of the street, you will continue going to the old school that was built in 1967? This feels like modern-day segregation.

- This does not need to happen mid-year! If it happens over the summer it's fine.
- I am a mother of 2 kids. 1 autistic and another to be tested. This is such a dramatic change that will personally affect my children who already suffer from anxiety and panic attacks with major changes. Even the small act of a sub teacher is a stressor this school is "home" for them. The teachers here have worked hand in hand with me to better help my kids.
- I am saddened about the idea that Lillian Black School is not considered a vital school building to house our students of the Spring Lake community. We have provided a positive, nurturing environment for the students as well as their families for many years and I am privileged to have seen the family learning atmosphere make a difference in many of our former students' lives, including myself, who attended LBES for 'grade school'
- How will this impact classroom sizes? Are more kids being put together in a class just for the sake of using a newer school to its capacity?
- Over 7 years ago I walked into the halls of Lillian Black. I didn't know what to expect and the nerves of a new school were abundant. But from the first moment I entered this school, I knew I was home. I was welcomed and embraced by a staff that operated like a family, I formed strong relationships with parents, many of whom attended LBES themselves, and the students became my second set of kids. I have never before worked in a school that cared so much about the students and families that it serves.

When the news broke that the closing of Lillian Black had been proposed, we were in disbelief. Lillian Black has been the pillar of this community. The school that is most associated with Spring Lake. The oldest and most historic school in town. Lillian Black is a small school that benefits the students immensely. We are able to recognize student needs and individualize instruction. We are able to get to know the students and parents on a personal level. Our students work hard for their teachers because they know we care. All of this would be lost by moving these students to a larger school setting. This proposal is not about what's best for the students of Lillian Black, but rather what's best for facility use. What our students need is stability, small class sizes, and individualized instruction.



For years I've sat quietly in the shadows and watched our school be last on the list for resources, have emails go unanswered, and requests unfulfilled. But I refuse to sit idle and walk away from this school without standing up for what I'm passionate about...the kids of LBES. This school is their heart. This school is their safe place. You see, Lillian Black isn't just a building for learning. Lillian Black is home. The home where they feel comfortable making mistakes. The home where they feel safe to ask questions. The home where every adult knows every child's name and makes each child feel important each day. If your proposal is to fill up a building, we are not your solution. We are not fillers of empty space. We are and always will be Lillian Black Elementary School.

- I think a decision should be made before the transfer window opens or the transfer window should be pushed to a later date. For those of us in which there is only one position per school and therefore cannot be reassigned with our students, it is unfair for us to not know what is going on until after the county transfer window. A secondary list would produce jobs that were not taken the first time and often there are not many positions for those in our role to choose from. This leaves many support staff members in limbo about what to do.
- I don't agree, the students at Lillian black should stay at Lillian black. It would be hard for them to adjust to a new school and new people and on top of that, they would have to start wearing a uniform. Lillian black has a great teacher-to-student ratio and my children have thrived at school. Also with covid, I don't think the children will be appropriately socially distanced if there are that many children getting crammed into one school. I really hope Lillian black stays open so my children can continue to enjoy school, they are not happy about hearing they may have to go somewhere else instead. Also, our family is against uniforms in schools so we would not be happy to be forced to send our kids to a uniform school.
- This is not specific to any particular plan however I wanted to share my thoughts on the reassignment in general. I agree that we need to do what is best for the students, so if that is reassignment, then so be it. However, I think those making these decisions are completely disregarding the mental health of all teachers involved in this by letting this process drag on through the end of March or even April (These dates were mentioned yesterday in the teacher/staff meeting). I understand that HR will do their best to ensure we all have equivalent jobs, and I appreciate that, however some of us in positions such as resource teachers, Instructional Coaches, etc. have fewer potential position openings across the district. Given the pay scales in this state, many cannot afford to drive 45+ minutes or more across the county. This process has been causing unease and stress since it was announced at the beginning of the year and I believe adjustments should be made by



the board to make sure that they have made their decision as soon as possible and BEFORE the transfer list is released. Again, I appreciate the initiative of this plan, however, a decision really needs to be made quickly, so staff can figure out their employment moving forward.

- Lillian Black students should go to W.T. Brown because Lillian Black's facilities are too old to support the students.
- no agree
- Lillian Black is a wonderful school with wonderful opportunities for our students. Students feel safe in our smaller classes and our staff is a tight-knit family. Our community is involved and knows that the staff cares about their children. Lillian Black means so much to all of its stake-holders. Putting our students in larger classes at WT Brown would put many of our students at risk of failure. Our students are able to thrive in the smaller classes we have at Lillian Black.

It is not fair for the final decision to be made after the transfer window closes. It actually feels like the decision has already been made, since closing Lillian Black is a part of all 3 plans. It would be nice for the Board to be upfront and honest with us and let us know whether or not we are closing.

- In favor of Plan A.
- Plan A is a good idea.
- I agree with this
- Absolutely not!
- Why isn't there a plan that doesn't include closing Lillian Black? You stated that the board could choose to do nothing, but we all know that will not happen. They will choose one of these plans, which means Lillian Black will close. There is an option that doesn't include Manchester and an option that doesn't include T.C. Berrien, but no option that doesn't involve Lillian Black.
- You spoke a lot last night about educational opportunities, but never could specifically identify what those opportunities are. All schools in the district are 1:1 and the teachers at LBES are just as highly qualified as those at other schools. The facility does not make the



education, the teachers do. Our students are receiving 21st Century Learning. We may not have a fancy lab to do these things in but they are still taking place. I've witnessed STEM activities in the media center and science projects in the classroom. The building does not make the learning happen.

- This plan would be best to meet the needs of students at both schools and allow for the reintroduction of programs that were at WT Brown previously, such as a top notch math lab, science lab, and learning lounge.
- I am against reassignment of Lillian Black Elementary School to W.T. Brown Elementary School
- Should not reassign Lillian black elementary. W.t. brown is too far from my house for my child to walk and I am not interested in bus transportation
- "No one wants to put their child at W.T. Brown. The school has suffered extreme depletions of students, but to lose more than 2/3 of the school in less than ten years should scream the issue to the CCS School Board. It is a newer building, but other than that, there is nothing to offer at W.T. Brown. The school shows less than national averages for math, reading and overall testing. The principal and teachers have remained the same over the last five years. Even Dr. Connelly and other administrators looked embarrassed at the only W.T. Brown staff member who spoke at the meeting. If the parent facilitator who spoke at the meeting is an indication of what W.T. Brown offers, it is just one more reason to not want to put a child there.
- It is one of the lowest performing schools in the state although it used to be one of the most popular schools in the district when it was year-round AND a school of choice. To remove both resulted in bringing the student population down needing to replenish once again in a "school realignment" in 2013. More than 520 children were sent from Howard Hall, Alger B. Wilkins, Vanstory Hills and Alma Easom to W.T. Brown bringing the total number of students to 660 in the fall of 2013.
- Now, that number is down to 207 students in 2022. From 660 students to 207 in less than ten years. Those numbers are not the direct result of "aging neighborhoods" when you look at the several large apartment complexes built in Spring Lake over the last decade. Those numbers are due to parents choosing to go elsewhere whether it be to private school, homeschool or other choices within the district, or even by overlay district transfer into Harnett or Lee counties. If you have access to the data, it would be interesting to see where those students went. These students were bused from four different areas and



Spring Lake. In 2019, the student population was down once again, less than half full. Around 250 students from T.C. Berrien were sent to W.T. Brown in 2019. In 2022, the 250 students from T.C. Berrien were down to 178 students. There are now 178 students from T.C. Berrien and 207 students from W.T. Brown. That is a loss of 453 students from W.T. Brown and 72 students from T.C. Berrien. Something is not working.

- The bottom line is the CCS School Board needs to do better in Spring Lake. The year-round option was removed. The school of choice option was removed. Mae Rudd Elementary School concentrating on pre-K and kindergarten was shut down and is now another annex of FTCC. Our children deserve better. We deserve to have one of the best schools in the district. We deserve to have a STEAM/STEM school of choice in Spring Lake. We are located between the new hub of the biotech industry in Sanford and one of the most elite technological headquarters with the minds at Fort Bragg. It only makes sense to open the first STEAM/STEM school of choice in Spring Lake.
- That is great CCS schools should actually do that!
- I agree with Plan A, as it seems plausible
- Yes
- That is a big no . I dont want to reassign at all. I love my kids school being small. Its like a family. If there was a reassign they would get lost in the big crowd. They wouldn't get that one on one they get now. Plus W.T. brown is just a money hungry school with not as friendly staff.
- Absolutely not!
- I wouldn't mind this because that's where my daughter started out, but I would really miss the teachers and administration at Lillian Black.
- I am a parent of Lillian Black I don't like the placement at a bigger school. I love Lillian Black & the teachers & staff. The principal & assistant principal are a joy. I also love the smaller classrooms children can learn better. My baby girl is in the 1st grade & definitely excelling.
- Yes
- I don't approve



- My son attended W.T. Brown for Pre-k. We had a great experience and I believe plan A is the best situation presented. It effects the least amount of students and families. W.T. Brown is only a few blocks away from Lillian Black so traffic and routine would not be effected as much as the other options.
- I support plan A
- I think moving the school is a bad idea. The schools are already over crowded, and you want to rehome all these students. You really need to be focused on saving the schools you have. Hiring better teachers and actually teaching the students what they need to know. I can't believe that my kids have made it so far in school and they don't know anything. There is a huge problem in the efficiency of teachers and schools and now ya'll want to keep making the issues worse.
- As both a parent to a student attending Lillian Black and a staff member here, I do not believe our students will be best served by reassigning all of our students to W.T. Brown. Not only will some of the same children in the same neighborhoods continue to lack the resources now available to others, Lillian Black still has a lot to offer the community. I live in Fayetteville and have only become familiar with the Spring Lake area due to my job, however, I realized at the beginning of the year that we are truly all in this together. The way our parents and staff operate cohesively to ensure student success is unlike anything I have seen before. Even with a lack of resources on site, families and staff find a way to make things happen so our children feel very little of these effects. Instead of cramming all of these students together to fill one space, thus taking away from the one-on-one instruction time afforded by smaller class sizes, Lillian Black, Manchester and T.C. Berrien should be pumped with resources to ensure equitable and just access to education for all Spring Lake/CCS students.
- no
- I am in favor of closing Lillian Black now that I know how poor the conditions of the school are.
- Yes!
- I think it's a great idea...it's time for the upgrade.
- Would this mean the students in W.T brown whom already got accumulated with their teachers be reassigned as well
- Yes I would like from my childhood hide to attend school at WT Brown



- Yes WT Brown

- As a parent, I am definitely opposed to plans A, B, and C. I believe that it is most beneficial for Lillian Black to remain separate from other schools. One of the main reasons I wanted my son to attend Lillian Black is because of the low student to teacher ratio. Working in a school setting has truly helped me realize that it is impossible for 1 teacher to give 10 students, let alone 18-20 plus students what they need since each child is on a different level academically, socially and emotionally. The smaller the student to teacher ratio, the more students have the opportunity to receive a quality education. Reassigning students to an academic setting that would result in them being in a larger classroom setting with fewer opportunities for 1:1 support is definitely a disservice to the children. I was brought up in public school and was an advocate of my children doing the same as long as they were receiving a quality education and I believe the smaller classroom settings at Lillian Black has allowed my child to have an amazing school year thus far. Unfortunately, reassigning students would result in me as a parent exploring alternative educational settings as I do not want my child to be "another number" to a teacher who may be overwhelmed and overworked. Please consider how reassigning students will affect children receiving the academic support they are in need of.

Share your thoughts on Plan B ... Reassign all Lillian Black Elementary School and the southern-most portion of Manchester Elementary School to W.T. Brown Elementary School

- No
- No my daughter loves her school at Manchester
- Lillian black Elementary To Manchester Elementary
- Yeah move them to Manchester
- I know my voice is small and insignificant. I'm highly disappointed that Manchester is not being incorporated into W.T. Brown. Our school has been disenfranchised for years. For years we have worked in poor conditions and received patchwork to plug the wholes and gaps. This is a time that those wrongs can be righted. All of the students who currently attend Manchester Elementary deserve an opportunity to attend WT Brown just as Lillian Black is going to attend. Manchester needs to be closed down as well. The building is old



and in poor repair. Then looking at the way you are cutting the maps you are leaving some of the most vulnerable students behind at Manchester with stripped away funding and resources.

The only right thing to do would be to merge Manchester and Lillian Black at WT Brown. This would unite the community and all of the resources can be joined together in one school. Spring Lake deserves more support and attention, not just when test scores come out.

- This does not need to happen mid-year! If it happens over the summer it's fine.
- Same thoughts as for Plan A ~ LBES is a sound structure which has undergone a few upgrades; however, with a few additional upgrades could still be a positive learning environment for the Spring Lake community
- How will this impact classroom sizes? Are more kids being put together in a class just for the sake of using a newer school to it's capacity?
- I choose Plan B
- This would be a great reassignment
- Manchester has the worst score on great schools.org. with covid how can they properly social distance our children if they cram more kids into one building.
- I think that all students at Manchester should go to WT Brown. All students should be privy to 21st century education. The 270+ kids being left back at Manchester will be left behind and still will have the same education. Is there anything that Manchester will receive as far as resources for students not moving to the bigger better school?
- Do not move any Manchester students. Keep them all there.
- I believe this is the best option of the three.
- no agree
- As a parent of Manchester students, I think ALL of the students at this school should be given the opportunity to be reassigned to W.T. Brown. They NEED better education/learning and better resources; Anything better than what they have now. These



children need a CHANCE!!! I feel that giving them ALL an opportunity to go to W.T. Brown will have a tremendous improvement of their future...OUR FUTURE!!!

- I disagree because this is not equitable. CCS boast about providing an equitable education for all but you are prepared to leave 281 if the most vulnerable student population with fewer resources and supports. Manchester has knowingly been neglected and forgotten about for years.

You are willing to bus students in from other schools that are overflowing verses give the students in the Spring Lake community better resources, supports, a modern updated building and more. Then it's interesting to see that the majority of the neighborhood that you slated to go to WT Brown have high concentrations of military families.

This shows you are only concerned about the wealthier families. You are leaving the poor students behind. You are not protecting or caring about their educational experience. So in 10-15 years when Manchester is in poor condition... what will you do then? Build a new school or finally accept Manchester's students.

- The schools will be too crowded!
- I am against reassignment of Lillian Black Elementary School to W.T. Brown Elementary School
- Should not reassign Lillian black elementary. W.t. brown is too far from my house for my child to walk and I am not interested in bus transportation
- "Lillian Black is a historic school, which means a lot to our community. I thought it was very telling that the principal and several teachers were represented at the meeting the other night. W.T. Brown staff was one parent facilitator, who quite frankly did not represent her school well. The principal was not there. There were also several teachers from Manchester Elementary School. If there was a principal change, everyone spoke highly of the Lillian Black principal.
- This building represents the best in Spring Lake. Its gorgeous hardwood floors and large library, it serves as a beacon in Spring Lake with a over 100 year old history of educating our generations. It is also on the cover of the Spring Lake history book. It would be a shame for this building, which has been let go over the years through different priorities, to be closed merely because the CCS School Board cannot think outside the box. With a little



TLC, this would make a great administration building, remain open for our future or even become a preschool.

- Preschool is another issue altogether in Spring Lake as we all see and feel the desert of NC Pre-K available to our town. To make W.T Brown, Lillian Black or Manchester Elementary a state of the art preschool might solve quite a few issues. There has to be funding solutions to bring the pillar of education to our town in a large way. Once upon a time, not too long ago, parents from all over Cumberland County drove their children to W.T. Brown. The school was full. It was functioning. It was successful. It was a school of choice and parents chose to bring their children there, from all over Cumberland County including Hope Mills, Gray's Creek and North Fayetteville. This was the last time Spring Lake saw any significant money in our town from the CCS School Board.
- This year, my four year old was placed through Cumberland County Early In at Cliffdale Elementary School. He is slated for Lillian Black; however, Cliffdale and Warrenwood Elementary Schools were the closest to Spring Lake. I was lucky I could drive him. If not, he might have been without a preschool option this year. He has now been moved to Warrenwood Elementary School for the exceptional child preschool program.4
- I realize preschool is not a priority in NC, but studies have shown in record numbers that preschool is a fundamental necessity to our future generations. If jails determine rooms for school performance in the third grade, then we have to do our best to catch our children earlier, to educate and prepare them for the years ahead. Our children's lives are determined by third grade. Our children deserve better in Spring Lake.
- I mean kinda but my daughter used to go to Manchester & she really don't like it so ya..
- Plan B could also work for all schools involved.
- No
- Same as my other answer.
- Absolutely not!
- I do not agree with this plan either. I really wish everyone could vote to keep Lillian Black open. I cannot speak for Manchester. Both of my girls go to Lillian Black. Which I know is a great school. We are definitely not missing any resources. As stated in the meeting on video. I'm not opposed to change at all. But why fix something that isn't broken. It really would be disappointing to me & other parents staff at Lillian if it were to close. Mr. Watkins



is doing a wonderful job. It would be sad if it were to be shutdown & turned into something else. I still say please keep Lillian Black open it's a great school.

- No leave Manchester students there at school my daughter loves Manchester
- There was a lot of discussion about why people think this is a done deal. Although we have been told the board may choose to do nothing, that was not formally presented as an option. There should have been an option D of no changes. All options presented involve LBES. Also the FAQ states that LBES has been part of a repetitive discussion every year, which makes it feel as if the push is there to close. Many faculty are concerned about employment for next year due to the late nature of the decision. We understand we are guaranteed a position, but are concerned about where and in what capacity.
- It's not right to send half the students to different schools I never went to none of these schools and I don't trust my children going to a school I haven't did research on why send only portions of students it just doesn't make any sense I don't approve
- My daughter is thriving in Manchester Elementary. She loves school and is doing amazing everyday. I feel like reassigning her to another school will only confuse her and cause lack of motivation.
- My husband and I believe moving just one school would be more beneficial to the kids and staff. Overcrowding can greatly hinder a children's need for any one on one time they might need and an overload of stress on teachers and staff.
- Same as above. Keep the school, worry more about education, class sizes, and hiring better teachers.
- As both a parent to a student attending Lillian Black and a staff member here, I do not believe our students will be best served by reassigning all of our students to W.T. Brown. Not only will some of the same children in the same neighborhoods continue to lack the resources now available to others, Lillian Black still has a lot to offer the community. I live in Fayetteville and have only become familiar with the Spring Lake area due to my job, however, I realized at the beginning of the year that we are truly all in this together. The way our parents and staff operate cohesively to ensure student success is unlike anything I have seen before. Even with a lack of resources on site, families and staff find a way to make things happen so our children feel very little of these effects. Instead of cramming all of these students together to fill one space, thus taking away from the one-on-one instruction time afforded by smaller class sizes, Lillian Black, Manchester and T.C. Berrien



should be pumped with resources to ensure equitable and just access to education for all Spring Lake/CCS students.

- yes
- The areas with the proposed reassignments for the Manchester school district area is a GO! With many military families living off post in those neighborhoods, the on post daycares do not cater to Manchester elementary but they do cater to W.T Brown. I have had to transfer my child twice to W.T Brown. I would love if this would go into effect, it would help a ton of military families.
- I am MOST in favor of this plan. Lillian Black's conditions have been poor for many years. And I recognize the growth for Spring Lake may require the agility of keeping one of these schools open.
- This will once again divide the community as far as who the student that will be benefiting from a quality and more modern school.
- This is a great idea. Please make sure to upgrade the issues at Manchester.
- I don't see any problem with this idea, as long as it benefits the students future in a positive manner.
- WT Brown
- Yes

Share your thoughts on Plan C ... Reassign all Lillian Black Elementary School, the southern-most portion of Manchester Elementary School, and T.C. Berrien Elementary School to W.T. Brown Elementary School

- No
- No, my daughter loves her school at Manchester
- Lillian black Elementary To Manchester Elementary
- This doesn't make sense. Why not just merge Lillian Black and Manchester at WT Brown and allow TC Berrien to disperse throughout Fayetteville.



- Please take into consideration that the Exceptional Children's population (students with IEPs) will increase approximately 46% if this plan is selected. (currently 64 students- 140 total with Plan C.) This could also mean approximately 22% of the total population would consist of students with special needs.
- This move will overwhelm these students and that school. This does not need to happen mid-year! If it happens over the summer, it is what it is.
- Same thoughts as for Plan A, B ~ Lillian Black is vital to the growth of the Spring Lake community, thank you for the opportunity to share
- How will this impact classroom sizes? Are more kids being put together in a class just for the sake of using a newer school to its capacity? Covid is still rampant and the more students placed inside of one classroom not only puts the children at a higher risk, but it also minimizes the potential of the students getting the extra help (if needed) to be successful on their learning path.
- Like I said for option A this would make the situation even worse. Our family is totally against Lillian Black's closing.
- Instead of moving T.C. Berrien, move Manchester into wt brown... it sounds like the teachers from that school want to be moved
- T C Berrien kids can go to Warrenwood, Ferguson-Easley, Margret Willis, and Lucille Souders. Having T C Berrien kids come all the way to W T Brown is logistically ridiculous.
- Move Lillian Black to W. T. Brown for facility reasons.
- Keep Manchester students at Manchester.
- no agree
- I think TC Berrien students have been displaced long enough. Leave them at WT Brown. We are all our brother's keepers. Closing Lillian Black has been in discussion for the past 10-15 yrs. Let's move forward with these babies.
- I have 2 students who go to Lillian Black. My children love it there. My youngest is definitely flourishing and has come all the way out of her shell. I know everybody talks



about small classrooms. Sometimes that's best & helps children become more focused & less distracted. They have teachers that are very dedicated & the principal is very welcoming & friendly. You can tell he really cares about his staff and his students. So honestly I don't like any of the plans. It would be nice to see Lillian Black stay open.

- Again I only agree with Lillian Black. I have officially lost confidence and faith in CCS. It shows that you do not care about low-income schools. It shows that you are willing to divide a community versus unite them. It shows that your mind is already made up. It's completely unacceptable that all of these years that WT Brown has had this low enrollment that Lillian black and Manchester had not merged into one school. In my honest opinion, the board needs to go back to the drawing board. W.T. Brown needs to be for spring lake students only and the students who attend W.T. Brown currently can and should be dispersed back throughout Fayetteville.

CCS does not plan to invest in spring lake so instead of kicking the can down the road, make the tough EQUITABLE decisions now that are right, just and fair for the students and families of Spring Lake. They deserve it, need and should have that right.

I'm curious how the Leandro Case lines up with what is happening with this redistricting plan

- Absolutely not!
- I feel like this plan would put too many students at W.T. Brown, not allowing for future growth at this end of the county. In addition, this plan makes it more difficult for TCB parents to get to the school. The best solution for those students is for them to be closest to home.
- I am against reassignment of Lillian Black Elementary School to W.T. Brown Elementary School
- Should not reassign Lillian black elementary. W.t. brown is too far from my house for my child to walk and I am not interested in bus transportation
- "The two solutions I have for Spring Lake. It is past time that the Cumberland County School Board look at funding in Spring Lake. We deserve more than we have received in the last 20 plus years. We are overdue for new life and a new 21st Century education program.



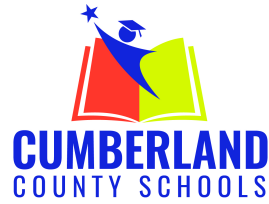
- 1) We are located between the new hub of the biotech industry in Sanford and one of the most elite technological headquarters with the minds at Fort Bragg. It only makes sense to open the first STEAM/STEM school of choice in Spring Lake. We deserve to have the best in Spring Lake and a school that would attract the masses to our town. There are so many STEAM grants out there that would help build this...Spring Lake makes sense. This could be housed at W.T. Brown, at Manchester or at Lillian Black with an update of classroom space and upgrade of faculty.
- 2) Explore historic preservation grants for upgrades to Lillian Black Elementary School. Our school, which is over 100 years old, does not need to be closed. It needs to be loved as its community loves it. Many in our town can remember when it was Spring Lake Elementary School. The generations of teachers and students means something in our town. Bringing a state of the art preschool to Spring Lake would solve many issues including a cycle of generational poverty. Our students in Spring Lake deserve to have a starting chance in life. Preschool is important and our children in Spring Lake need to have a walkable/nearby opportunity. Pre-K is desperate for space. Partnership for Children and our government agencies would be thrilled to have new state of the art preschool in Cumberland County and Spring Lake can get the grants to get it done. Look at our town first!
- Closing our schools like you have and are proposing to do does not make sense. Yes, if you are looking at a building. If you are looking at buildings that you have neglected, then maybe you can justify a heinous and wrong closure of Lillian Black. You can look at shifting to a "newer" school, but you are just going to find worsening issues by ignoring the source of the problems. Do better. Look at the programs, the faculty, the offerings in Spring Lake - we deserve better, and it is time that the CCS School Board look our way again. Make us a priority. Make our children a priority. "
- Yes still
- I disagree with Plan C as I feel it continues to cause an inconvenience for the TC Berrien students and parents to travel a greater distance to attend W.T. Brown, which is much further away from their homes.
- No
- Same as my first answer.
- Absolutely not!



- My concern is would that be too many students. The students from TC Berrien would have to be bused in because I'm thinking of the distance those kids would have to go each day. Those kids are going to be tired and agitated in the mornings and especially in the afternoons. Is there any ideas or thoughts of building a new school?
- I definitely don't like this plan at all why transfer all these babies too one school. Our children are the ones in the classrooms.. smaller classroom sizes is great right now with all these new covid variants. I still say please keep Lillian Black open. Thank you a very concern parent
- No
- I don't approve
- I think that would overwhelm W.T. Brown greatly. I know they have the ability to be a high compacity school but I don't think that is a good idea for students, staff or the community. Teachers are already short staffed and I would hope that the teachers would be able to transfer with the children in any of these plans. Bussing children across town would put a harder strain on the already stressed bus situation. As well on parents that would be driving their children to and from. Also mentioning parents that can't drive to pick up their kids (ie have to walk to get them for some reason). All this adding even more to the already hectic traffic for drop off and pick up times.
- Same as above. Keep the schools, worry more about education, class size, and hiring better teachers.
- As both a parent to a student attending Lillian Black and a staff member here, I do not believe our students will be best served by reassigning all of our students to W.T. Brown. Not only will some of the same children in the same neighborhoods continue to lack the resources now available to others, Lillian Black still has a lot to offer the community. I live in Fayetteville and have only become familiar with the Spring Lake area due to my job, however, I realized at the beginning of the year that we are truly all in this together. The way our parents and staff operate cohesively to ensure student success is unlike anything I have seen before. Even with a lack of resources on site, families and staff find a way to make things happen so our children feel very little of these effects. Instead of cramming all of these students together to fill one space, thus taking away from the one-on-one instruction time afforded by smaller class sizes, Lillian Black, Manchester and T.C. Berrien should be pumped with resources to ensure equitable and just access to education for all Spring Lake/CCS students.



- yes
- I am not in favor of putting Fayetteville students above the needs of Spring Lake students because I am concerned about equity.
- T. C. Berrien students should attend a Fayetteville school. This would save on transportation cost.
- NO, NO, NOTC BERRIEN ELEMENTARY SCHOOL needs to RETURN BACK TO FAYETTEVILLE....PLEASE
- No I think that's putting the ratio to high in classrooms these kids are just jumping back from all virtual
- WT Brown
- Yes WT Brown



Agenda Item Details

Meeting	Mar 01, 2022 - Cumberland County Board of Education COMMITTEE MEETINGS, Starting at at 8:30 am
Category	2. Auxiliary Services Committee - Deanna Jones, Chair
Subject	2.04 CONSIDER Approval of Student Assignment Plan
Type	Action

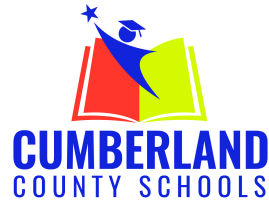
[WT Brown ES Presentation.pdf \(1,699 KB\)](#)

[Ferguson Easley ES Presentation.pdf \(7,430 KB\)](#)

[Byrd MS Presentation-.pdf \(962 KB\)](#)

[CCS STUDENT REASSIGNMENT FEEDBACK_.pdf \(266 KB\)](#)

[Student Assignment Recommendations\(2-25-22\).pdf \(614 KB\)](#)



Agenda Item Details

Meeting	Mar 08, 2022 - REGULAR BOARD MEETING, Starting at 6:00 pm
Category	7. DISCUSSION AGENDA: Auxiliary Services Committee Report - Deanna Jones
Subject	7.02 CONSIDER Approval of the Student Assignment Plan for Lillian Black (Plan A)
Type	Action

WT Brown ES Presentation.pdf (1,699 KB)

Student Assignment Recommendations(2-25-22).pdf (614 KB)

CCS STUDENT REASSIGNMENT FEEDBACK_.pdf (266 KB)

Proposed Reassignment Plans

Our Commitment: Every Student
Collaborative ★ Competitive ★ Successful

Criteria

- ★ Best Utilization of Facility Space
- ★ Proximity to Student's Home
- ★ Diversity
- ★ Contiguous Areas
- ★ Transportation
- ★ Feeder Schools
- ★ Minimal Movement of Students
- ★ Future Membership Growth
- ★ Economic

Assignment Change Drivers

- ★ Pandemic Impact
- ★ Proximity
- ★ Utilization
- ★ Diversity

Proposed Plans for Reassignment of Lillian Black

- ★ **Plan A:** All of Lillian Black ES (175) is reassigned to W. T. Brown ES.
 - Attempted goal (proximity and utilization)
- ★ **Plan B:** All of Lillian Black ES (175) and the southernmost portion of Manchester ES (78) are reassigned to W. T. Brown ES.
 - Attempted goal (proximity and utilization)
- ★ **Plan C:** All of Lillian Black ES district (175), the southernmost portion of Manchester ES (78), and T. C. Berrien ES (178) are reassigned to W. T. Brown ES.
 - Attempted goal (utilization and diversity)

Plan A

Drivers

- ★ Utilization
- ★ Minimal Movement
- ★ Diversity
- ★ Community Input (48/61)
 - Impacts least students and schools
 - Lillian Black facility condition
 - Best of options

Constraints

- ★ Additional change in a Pandemic
- ★ Community Input (48/61)
 - Chaotic time
 - Renovate Lillian Black and more resources
 - Loss of the Lillian Black culture
 - Lack of school choice
 - Make WT Brown a Spring Lake school
 - Bigger school and class size
 - Love Manchester

Plan B

Drivers

- ★ Utilization
- ★ Diversity
- ★ Contiguous area
- ★ Community Input (43/61)
 - Lillian Black facility condition

Constraints

- ★ Additional change in a Pandemic
- ★ Community Input (43/61)
 - Chaotic time
 - Renovate Lillian Black and more resources
 - Loss of the Lillian Black culture
 - Lack of school choice
 - Make WT Brown a Spring Lake school
 - Bigger school and class size
 - Love Manchester

Next Step

Recommend option for each target area for full BOE for approval.

Regular Meeting Cumberland County Board of Education

March 8, 2022

Superintendent Updates the Board

Dr. Connelly began his monthly update by noting that despite the challenges this school year, our district has remained #CumberlandStrong and steadfast in our commitments (Strategic Plan 2024) to have Successful Students, Premier Professionals, Exceptional Environments and Committed Community partners. He shared several notable mentions that included employees recently being published in the School Business Affairs Magazine, winning state awards for excellence and being selected to receive the NC Governor's Educator Discovery Award. Dr. Connelly also shared that CCS recently won the State Superintendent's Purple Star District Award and the National School Boards Association's 2022 Magna Award.

He encouraged individuals and businesses that are interested in volunteering in our schools to consider adopting a school, volunteering in a teacher's classroom, mentoring a student or acting as 'an extra set of eyes' on school campuses by volunteering as a School Watch Angel.

March Observances

Dr. Connelly shared that CCS is celebrating the following observances throughout the month of March: National Social Work Month, Developmental Disabilities Awareness Month, National Read Across America Week, School Social Worker Appreciation Week and National School Breakfast Week. He also announced that Pre-Kindergarten registration for the 2022-2023 school year has opened. Parents that have a child that will be four years old on or before August 31, 2022, should visit the CCS Pre-K website for more information.

He presented a short video that celebrates March observances.

The Superintendent concluded his remarks by extending heartfelt congratulations to Pete Horne on behalf of the entire Cabinet and Leadership Team as she prepares for retirement in April. Horne has served for many years as the executive assistant to the Superintendent and the Board of Education. Later in the meeting, members of the Board expressed their appreciation by presenting Horne with a floral bouquet, desk clock, and a plaque.

Recognitions

Student government leaders Catherine Oxendine from Jack Britt High School and Paige Canady from Terry Sanford High School served as the ex-officio members of the Cumberland County Board of Education during the March 8 meeting. Ex-officio members are given the opportunity to make comments, ask questions, and give input on any topic brought before the Board.

Board of Education

Greg West
Chair
At Large

Deanna Jones
Vice Chair
District #2

Judy Musgrave
At Large

Charles McKellar
At Large

Alicia Chisolm
Chair
District #1

Carrie Sutton
District #3

Donna Vann
District #4

Susan Williams
District #5

Nathan Warfel
District #6

Superintendent
Dr. Marvin Connelly

Administrative Recommendations

Principal

Terry Sanford High School John "Royvell" Godbolt

Assistant Principal

E. Melvin Honeycutt Elementary School Cheryel Hinkle

Administrative Transfers

Principals

District 7 Elementary School Kamal Watkins
Eastover-Central Elementary School Tanya Higgins
Pine Forest Middle School Cornelius Felder

District's Work with Opportunity Culture Extended

Through the Opportunity Culture initiative, the Board approved extending the district's contract with Public Impact, LLC, from July 1, 2022 through June 30, 2023. Opportunity Culture's role enables schools to reach every student with excellent teachers and their teams while paying teachers more for their extra responsibilities, and helping all educators improve on the job and work collaboratively.

Summer School, Summer School Testing Approved

Since the NC State Board of Education did not approve EOC or EOG retests in North Carolina, the Cumberland County Board of Education (CCBOE) approved the district offering a summer school session and then, schools administering tests at the end of the summer session, which will be administered online. The district must offer a summer school session in order to offer a test. In following guidelines established by the North Carolina Department of Public Instruction, a student may not test unless he/she attends a summer school session. All students who score a non-proficient (NP) are eligible to participate, but no one can be required to participate. A parental opt-in or opt-out letter will be sent by the school to the student's parent/guardian.

Board Approves Three Policy Revisions

The following revised policies (second reading) were approved by the Board:

4400 – Attendance

4120 – Domicile or Residence Requirements

5022 – Registered Sex Offenders

Board Approves Two March Observance Proclamations

The Board gave 'a nod' to two CCS proclamations with observances during the month of March: Developmental Disabilities Awareness Month (March 1 – 31) and National School Social Work Week in Cumberland County Schools (March 7 – 11).

Central Office Fire Restoration Project 'Gets the Green Light'

The district was given approval by the Board to proceed with the contents removal, cleaning and pack-out related to the Central Office Fire Restoration Project by The Contents Team in Garner, NC. At the cost of \$286,255.62, which was approved by the insurance company, The Contents Team will remove all remaining contents of the Central Office building, clean them off-site, re-pack/crate and place the items into storage off-site. The team will return the contents to the building once the restoration/renovation is complete.

Electoral Redistricting Considerations Approved

Approval was given by the Board to the following electoral redistricting considerations:

1. Preserve the cores of the existing local Board of Education districts;
2. Redistricting consultants should avoid pairing incumbent board members, i.e., no “double-bunking” in the same district; and
3. Redistricting consultants should not attempt to predict and account for future population and development shifts, i.e., base redistricting on 2020 Census results exclusively.

The Board is required to decide how the electoral redistricting considerations will be addressed.

Student Assignment Plan for Local Middle School Passes

The Board voted to reassign all 284 students at Ireland Drive Middle School to Douglas Byrd Middle School next school year (2022-2023).

Local Elementary School Closes its Doors, Reassignment Plans for T.C. Berrien, Lillian Black Students Approved

The Board of Education voted to close the T.C. Berrien Elementary School building, effective the end of the school year. In October 2019, concerns were raised about the structural integrity of the floor slab in the second wing and poor indoor air quality throughout the T.C. Berrien main school building.

Also, members of the Board approved the following Student Reassignment Proposals for the 2022-2023 SY:

- Dividing students at T.C. Berrien Elementary School between the Lucile Souders and Ferguson-Easley Elementary School campuses;
- Reassigning all Lillian Black Elementary School students and 78 students from Manchester Elementary School to W.T. Brown Elementary School.

Approval Given to Apply for Needs-Based Public School Capital Grant

The CCBOE voted to apply for the 2021-2022 Needs-Based Public School Capital Fund grant for \$50 M toward the new construction of the E.E. Smith High School building.

Board Approves Revised COVID-19 Face Coverings Policy

The Board approved the revised Policy 6141 COVID-19 Face Coverings. The policy recognizes that face masks are optional (1) for Cumberland County Schools' students, staff and visitors and (2) on all public school transportation. The policy further states that (1) since COVID-19 vaccines are much more widely available, CCS will now provide for voluntary testing of staff and students in all schools; and (2) as required by North Carolina Session Law 2021-130 (Senate Bill 654), the Board shall vote at least once per month either to maintain this policy in its current form or to modify it for the 2021-2022 school year only.

Board Recognition

Betty Musselwhite, the associate superintendent of School Support Services, introduced CCS' Extra Mile and Committed Community Support award recipients to the Board to be recognized:

Extra Mile Award Recipient

Andrew Kounas, a science teacher and the Science Olympiad Club facilitator at Luther 'Nick' Jeralds Middle School, was nominated for the Extra Mile Award by his school's bookkeeper, Tammy Duggins. She said that Kounas is “a beacon of selfless service and he

demonstrates excellence in and out of the classroom to make sure their students have the skills and materials they need to be successful.” From ensuring that all students are picked up from after school activities and donating to the athletic program to securing track shoe donations for the girls’ track team every year, Kounas has “a heart of gold.” Duggins further added that his commitment to the safety and success of the children at Luther ‘Nick’ Jeralds Middle School has no limitations.

Committed Community Support Award Recipients

Paige and Ty Ross and Olde Fayetteville Insurance and Financial Services received the Committed Community Support Award for their long-time partnership and generous support of Cumberland County Schools. For years, Olde Fayetteville has co-sponsored the district’s annual Teacher and Beginning Teacher of the Year celebrations to help honor exceptional CCS educators. In December, they partnered with the *Bikes for Kids* Foundation and American National Insurance to bring the first *Bikes for Kids* program to Cumberland County. Through this effort, they were able to provide books and 50 bikes and helmets to third graders at two of the district’s Title I schools through the character-building program.

The Extra Mile Award is designed to acknowledge employees who demonstrate sustained high levels of performance and inspire others to do their best. The Committed Community Support Award is given to mentors, businesses, community partners, parents and volunteers who dedicate their time and resources to assist schools and help students succeed. Both monthly awards recognize and applaud those who go ‘above and beyond’ to make certain students are successful and who champion what the CCS values.

-END-